

ROOF REPLACEMENT

WYANDOTTE COUNTY JUSTICE COMPLEX

710 N. 7th STREET
KANSAS CITY, KS 66101

DRAWING NUMBER	DRAWING NAME
A100	ROOF PLAN
A101	TAPER PLAN
A102	LIGHTING PROTECTION PLAN
A103	DETAILS
A104	DETAILS
A200	SOUTH ELEVATION
A201	NORTH ELEVATION
A202	EAST ELEVATION
A203	WEST ELEVATION





710 N. 7th ST
KANSAS CITY, KS 66101

Date: FEBRUARY 2017

Scale: 1/16"=1'-0"

Drawn By: RTI

Reviewed By: MJG

Revision No.	Date
--------------	------

Table 1

[illegible]

RTI No. 17015.02

Drawing Title

ROOF PLAN

Drawing No

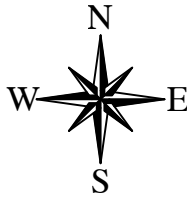
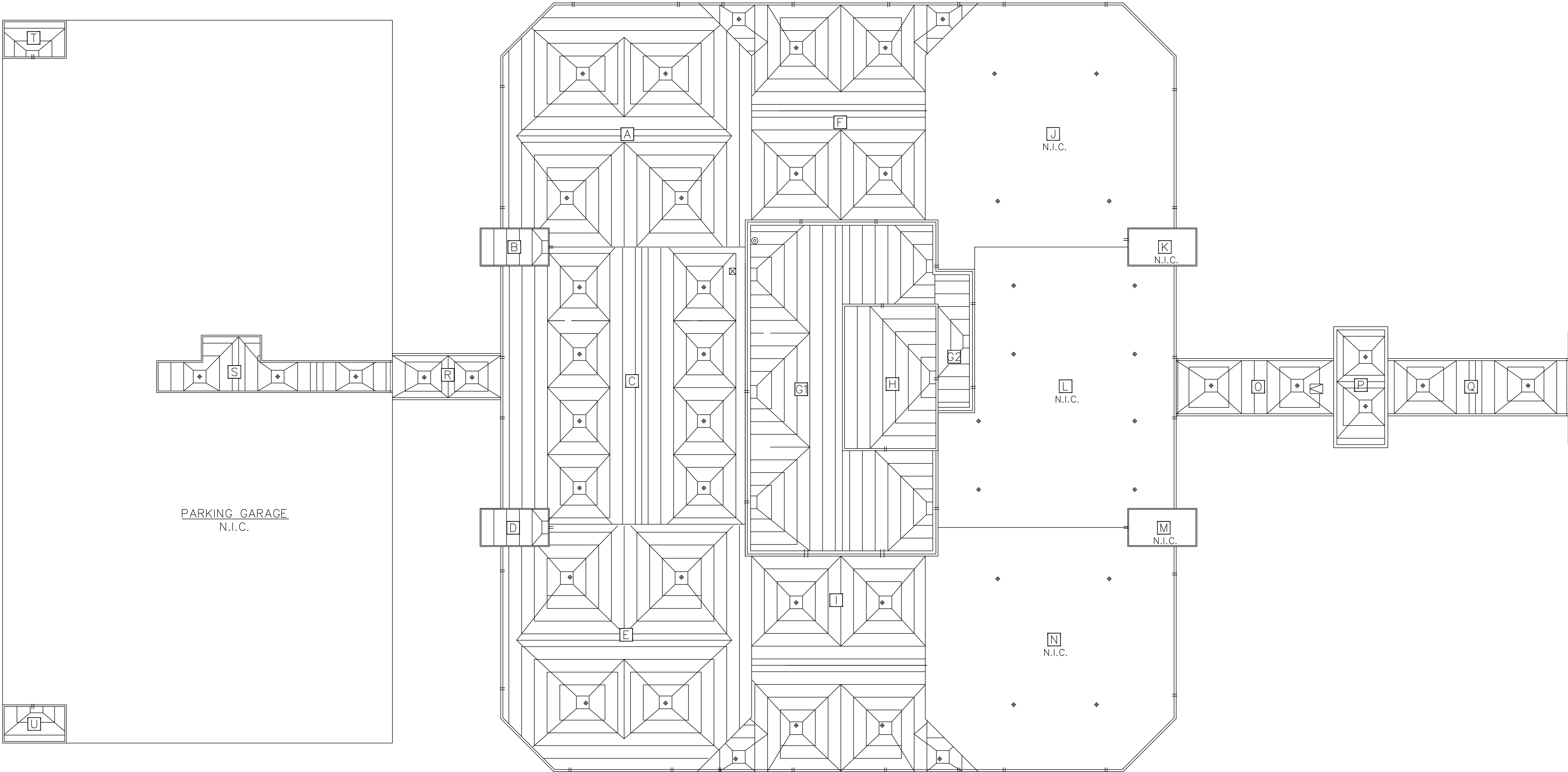
A100



1. CONTRACTOR RESPONSIBLE FOR PROTECTION OF EXISTING CONCRETE, ASPHALT AND LANDSCAPED AREAS. REPAIR DAMAGE CAUSED BY CONTRACTOR. REPAIRS SHALL BE PER OWNERS REQUIREMENTS.
2. CONTRACTOR RESPONSIBLE FOR PROTECTION OF ALL EXISTING ROOF SURFACES.
3. CONTRACTOR TO FOLLOW ALL SAFETY REQUIREMENTS PER OSHA.
4. AT COMPLETION OF PROJECT REMOVE DEBRIS FROM ADJACENT ROOF AREAS.

NOTES:

1. CUT EXISTING CAST IRON PIPE 6.0 INCHES ABOVE SURFACE OF NEW ROOF SYSTEM. INSTALL NEW LIQUID FLASHING. PIPE WILL NOT BE USED AS A ROOF DRAIN LOCATION.
2. PARAPET WALL OVERFLOW LOCATIONS.
3. WHEN NEW PARAPET WOOD BLOCKING AND PARAPET COPING ARE INSTALLED, CONTRACTOR WILL BE REQUIRED TO REMOVE AND REINSTALL ALL ELECTRICAL CONDUIT AND LIGHTNING SUPPRESSION CABLE THAT IS CURRENTLY ATTACHED TO TOP OF PARAPET WALLS. REINSTALL EXISTING LIGHTNING PROTECTION SYSTEM TO MATCH EXISTING INSTALLATION. FOLLOWING COMPLETE REINSTALLATION, SUCCESSFUL TEST TO CONFIRM ELECTRICAL CONTINUITY OF REINSTALLED SYSTEM SHALL BE PERFORMED BY A LICENSED ELECTRICAL CONTRACTOR.
4. CONTRACTOR SHALL BE RESPONSIBLE FOR REMOVAL AND REINSTALLATION OF SECURITY CAMERA.
5. ROOF AREA G1 IS A STRUCTURAL CONCRETE ROOF DECK. ROOF AREA G2 IS A STRUCTURAL METAL ROOF DECK.
6. LOWER EXISTING PARAPET WALL SCUPPER LOCATIONS TO TOP OF STRUCTURAL ROOF DECK.
7. INSTALL NEW CONDUCTOR HEAD AND DOWNSPOUT.



Project Name

WYANDOTTE COUNTY JUSTICE COMPLEX

710 N. 7th ST
KANSAS CITY, KS 66101

RTI Consultants
22117 W. 83rd Street
Lenexa, KS 66227
(913) 649-6565

Date: FEBRUARY 2017

Scale: 1/16"=1'-0"

Drawn By: RTI

Reviewed By: MJG

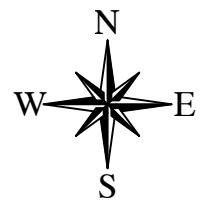
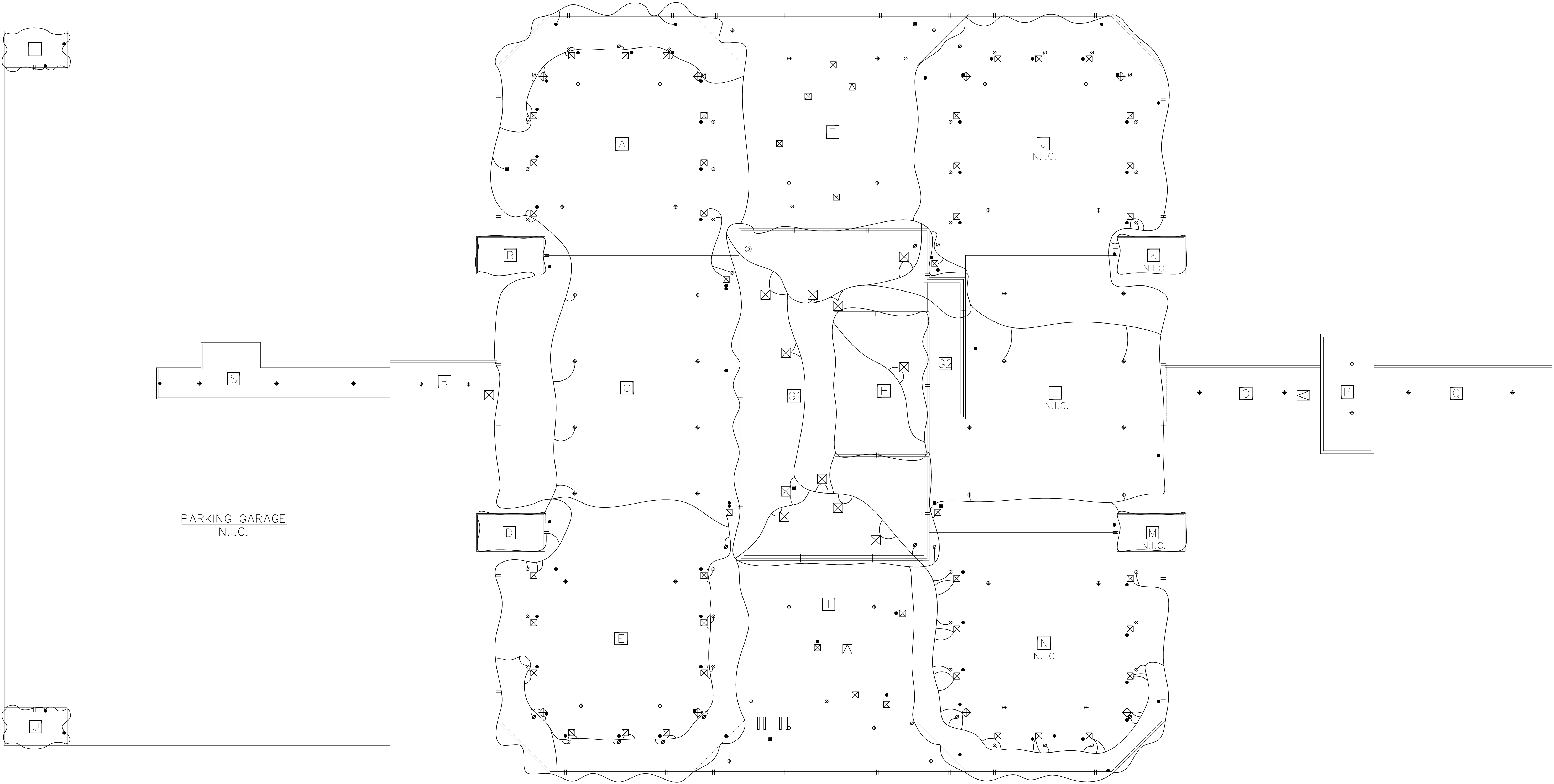
Revision No.	Date

RTI No. 17015.02

Drawing Title
TAPER
PLAN

Drawing No.

A101



Project Name

WYANDOTTE COUNTY JUSTICE COMPLEX
710 N. 7th ST
KANSAS CITY, KS 66101

RTI Consultants
22117 W. 83rd Street
Lenexa, KS 66227
(913) 649-6565

Date: FEBRUARY 2017

Scale: 1/16"=1'-0"

Drawn By: RTI

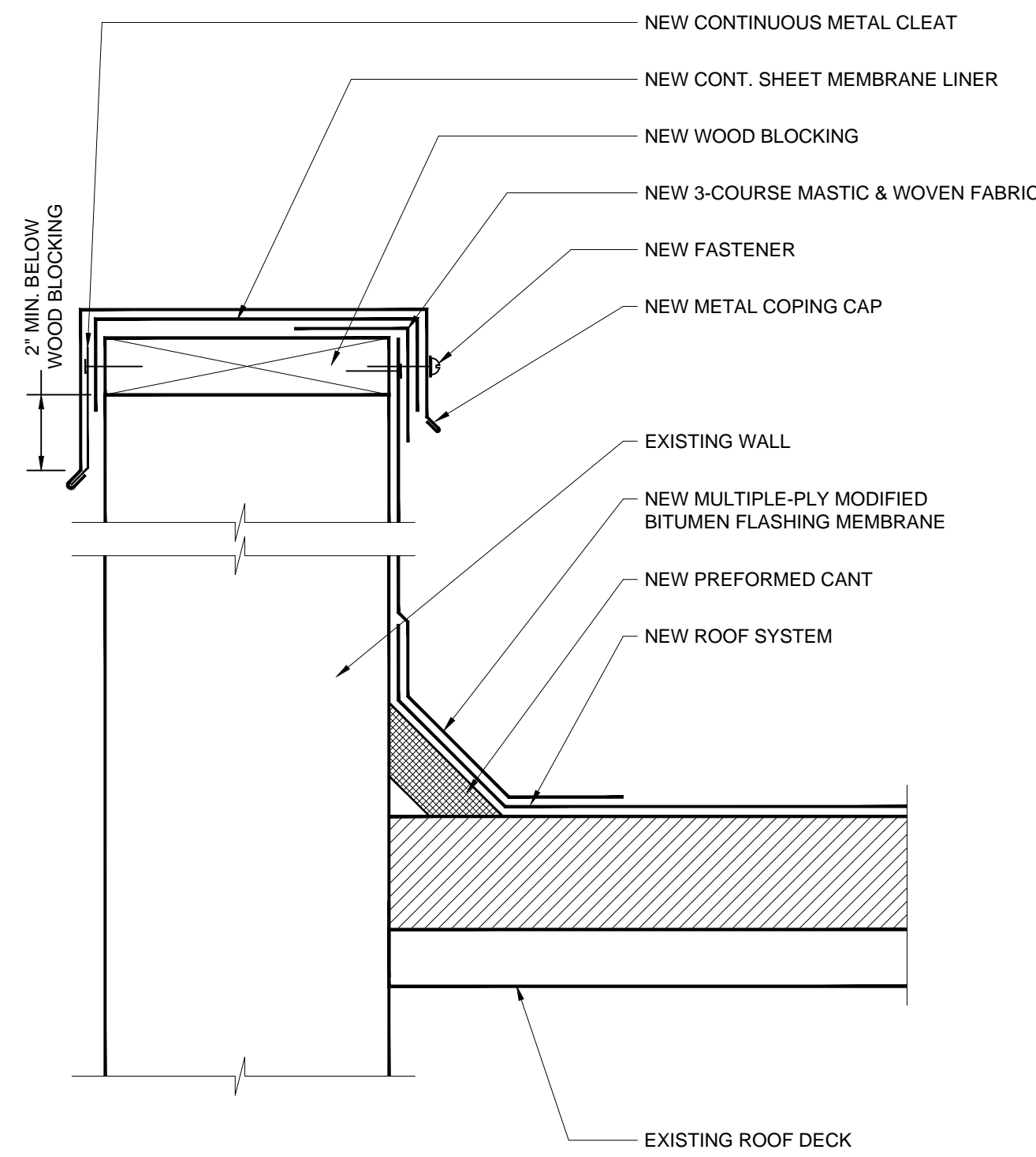
Reviewed By: MJG

Revision No.	Date

RTI No. 17015.02

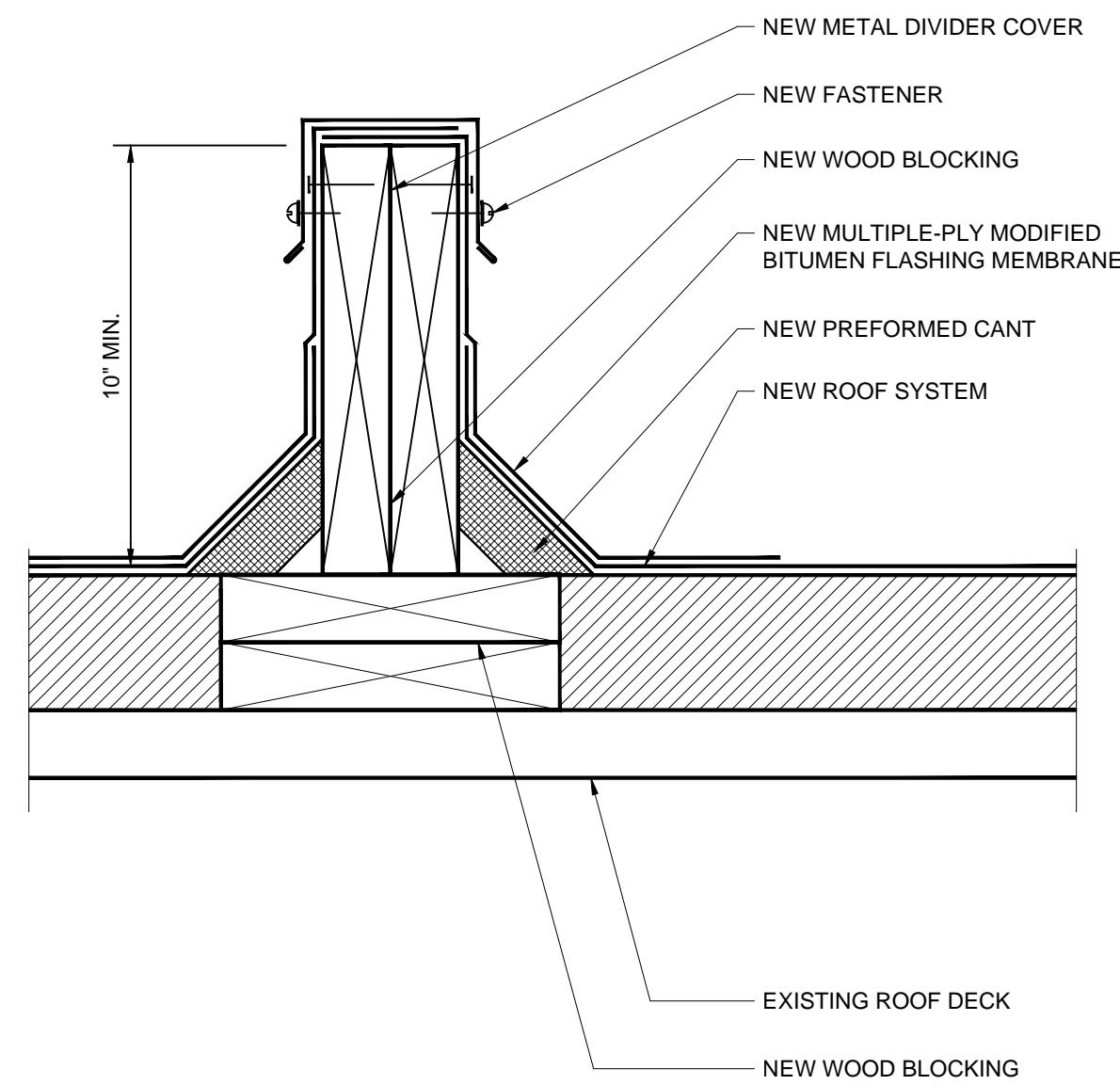
Drawing Title
LIGHTING
PROTECTION
PLAN

Drawing No.
A102



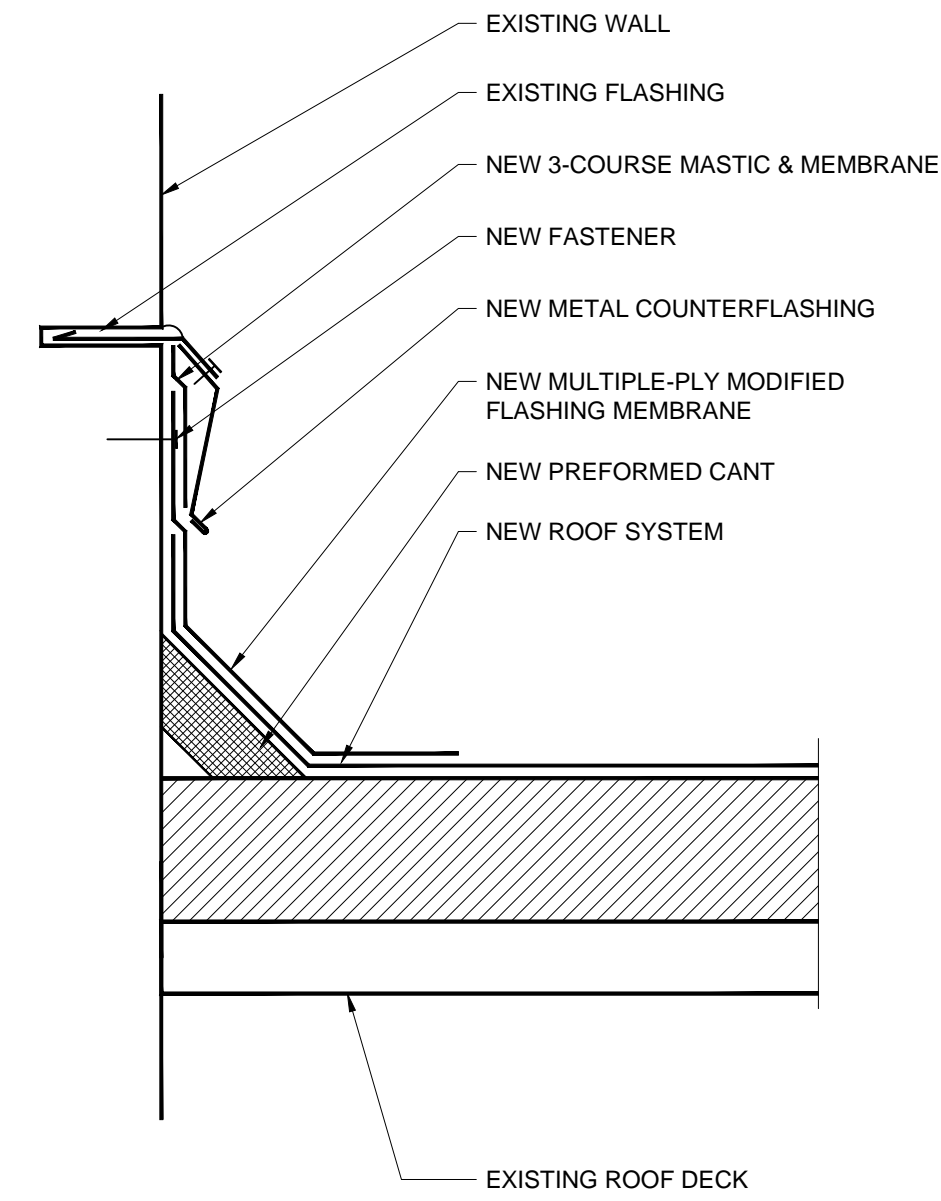
1
A103

PARAPET WALL COPING



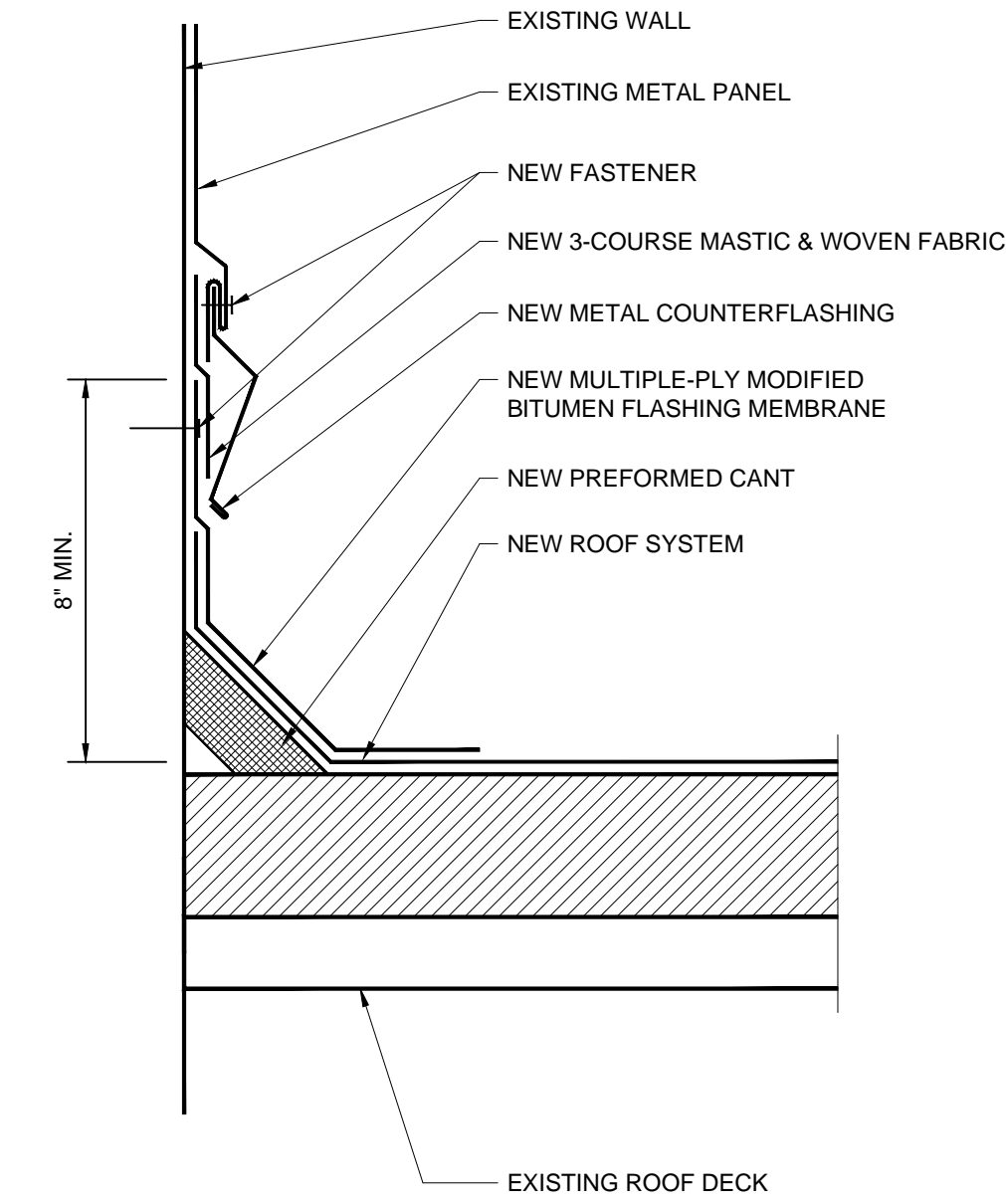
2
A103

AREA DIVIDER



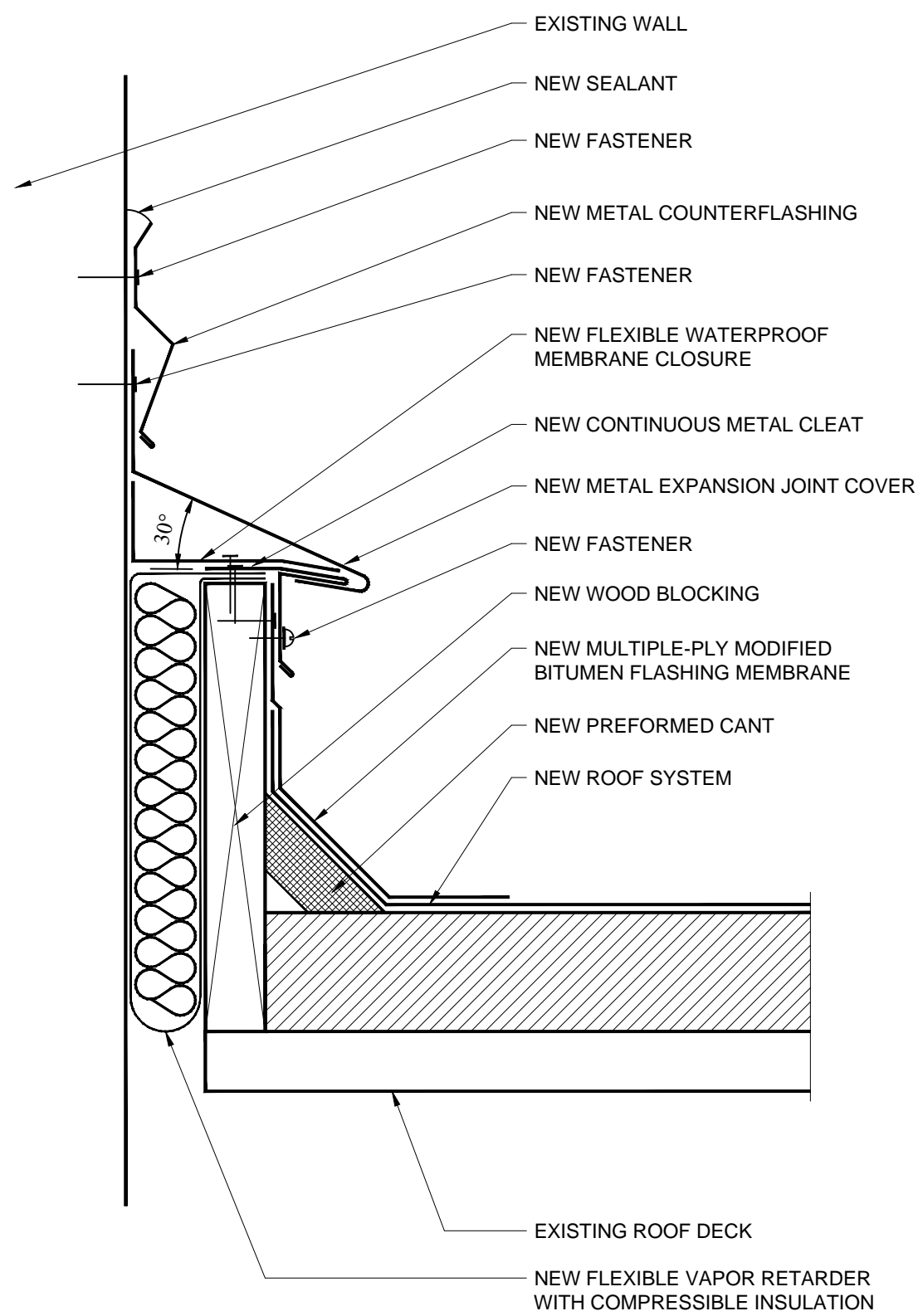
3
A103

WALL



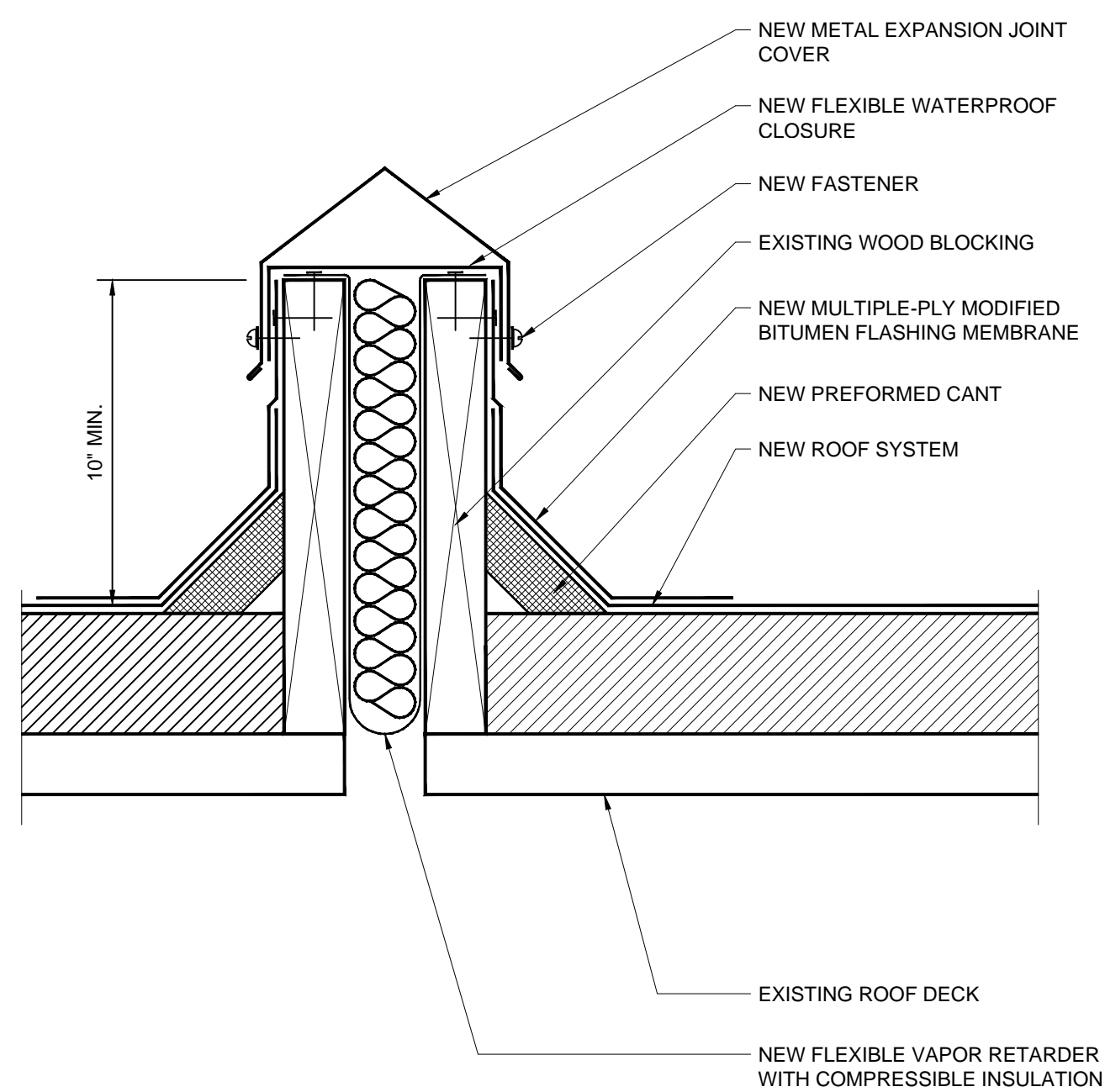
4
A103

WALL METAL PANEL



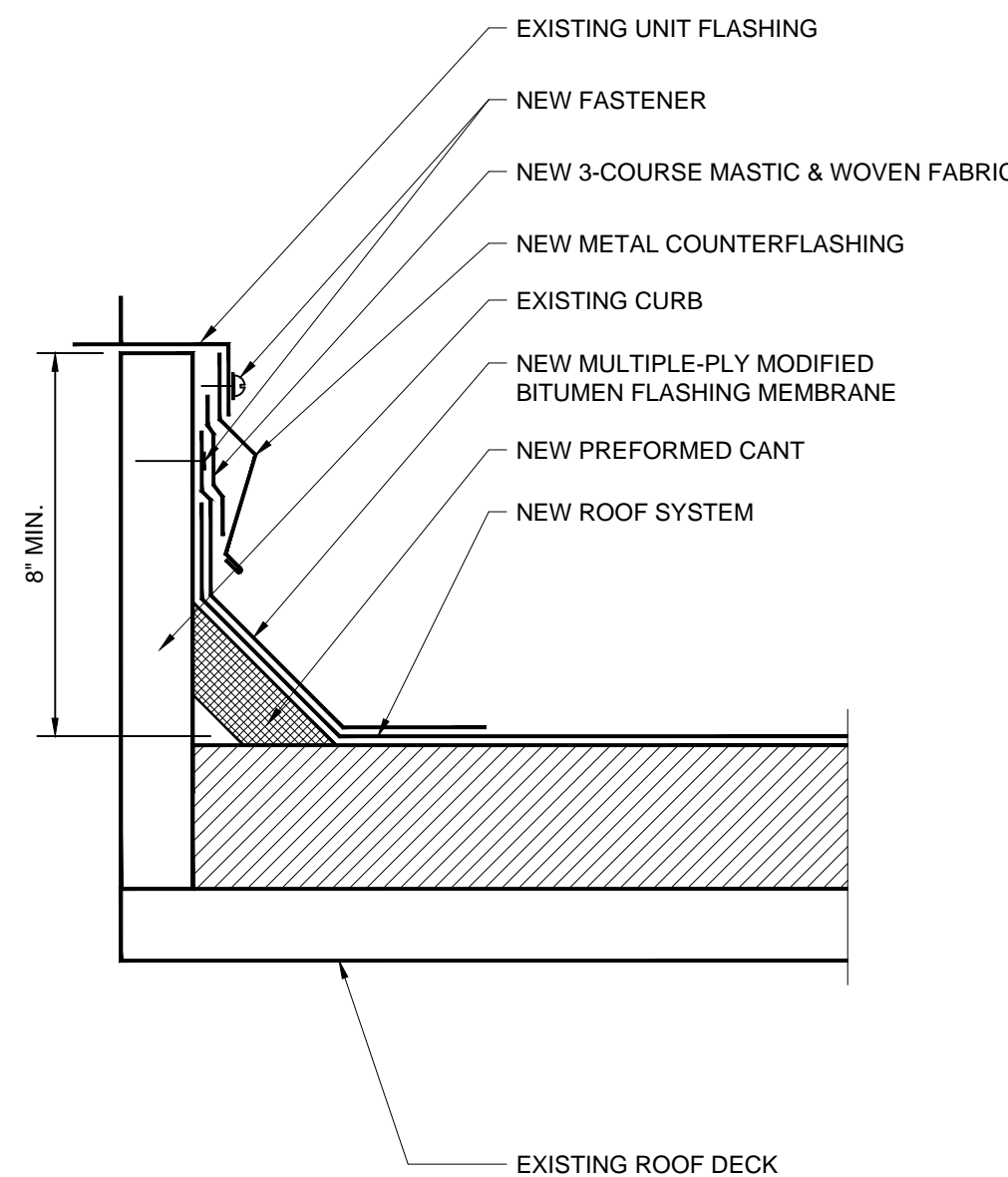
5
A103

WALL EXPANSION JOINT



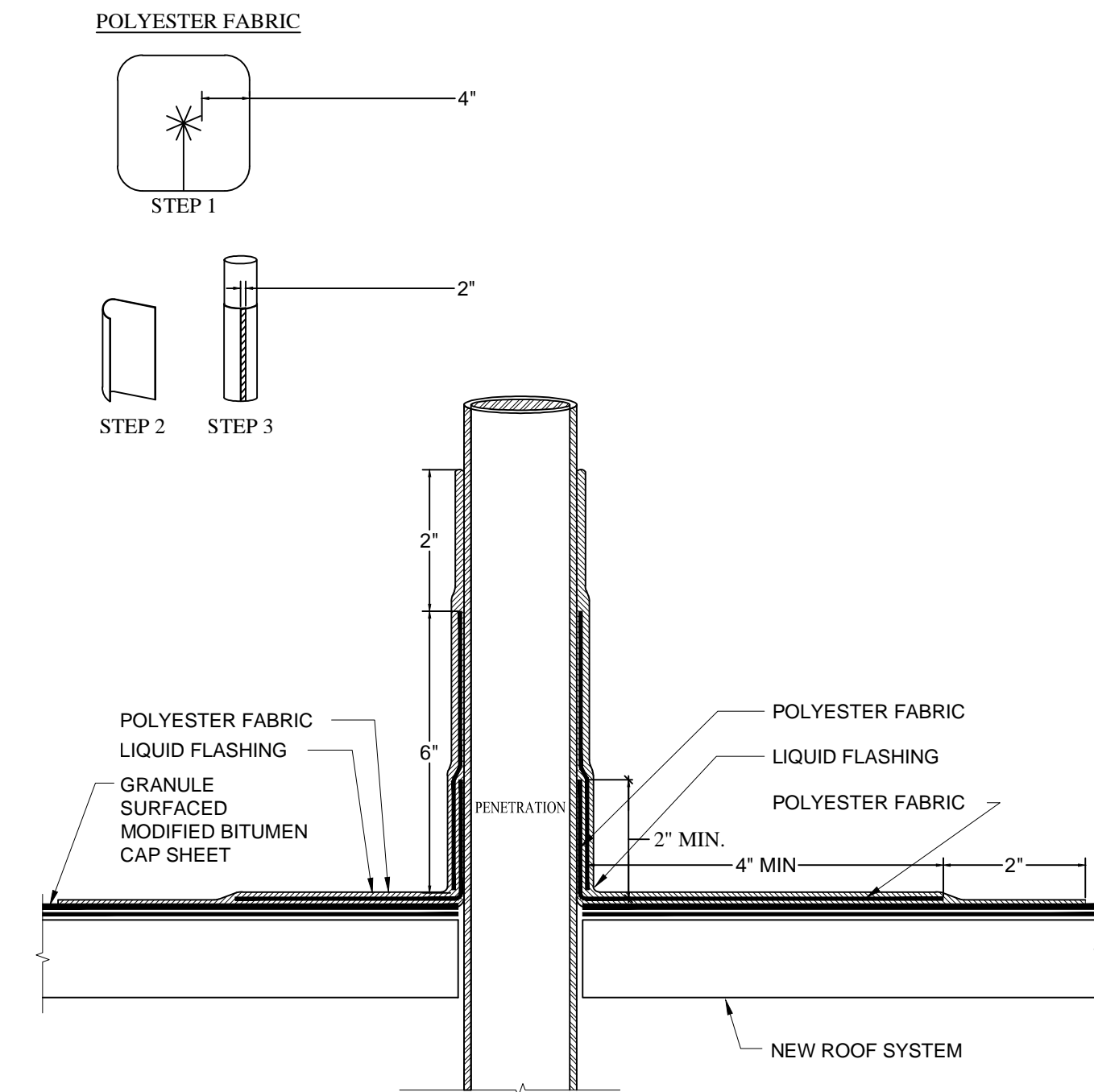
6
A103

EXPANSION JOINT



7
A103

CURB



8
A103

PLUMBING VENT

Project Name

WYANDOTTE COUNTY JUSTICE COMPLEX
710 N. 7th ST
KANSAS CITY, KS 66101

RTI Consultants
22117 W. 83rd Street
Lenexa, KS 66227
(913) 649-6565

Date: FEBRUARY 2017

Scale: NOT TO SCALE

Drawn By: RTI

Reviewed By: MJG

Revision No. Date

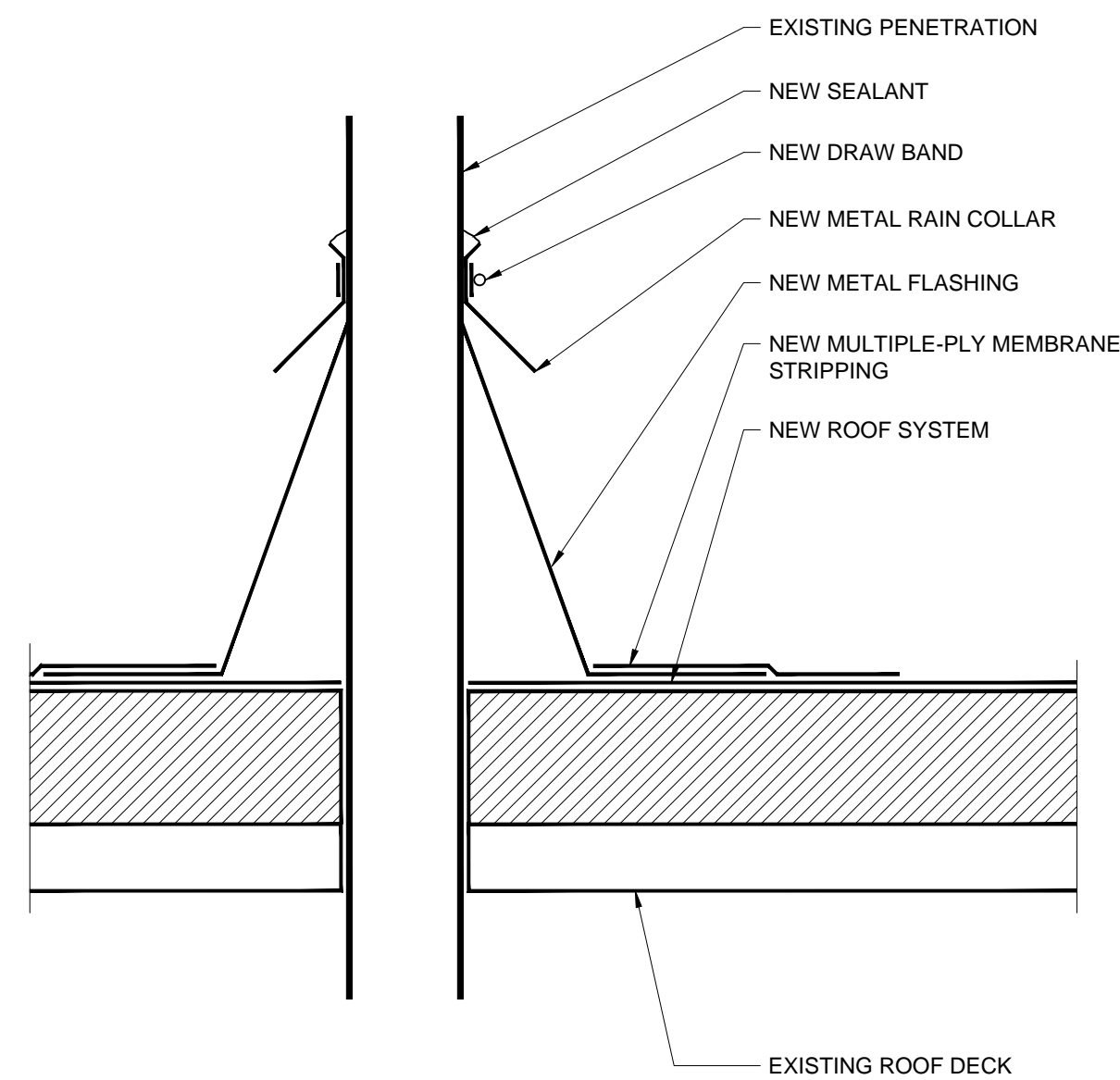
RTI No. 17015.02

Drawing Title

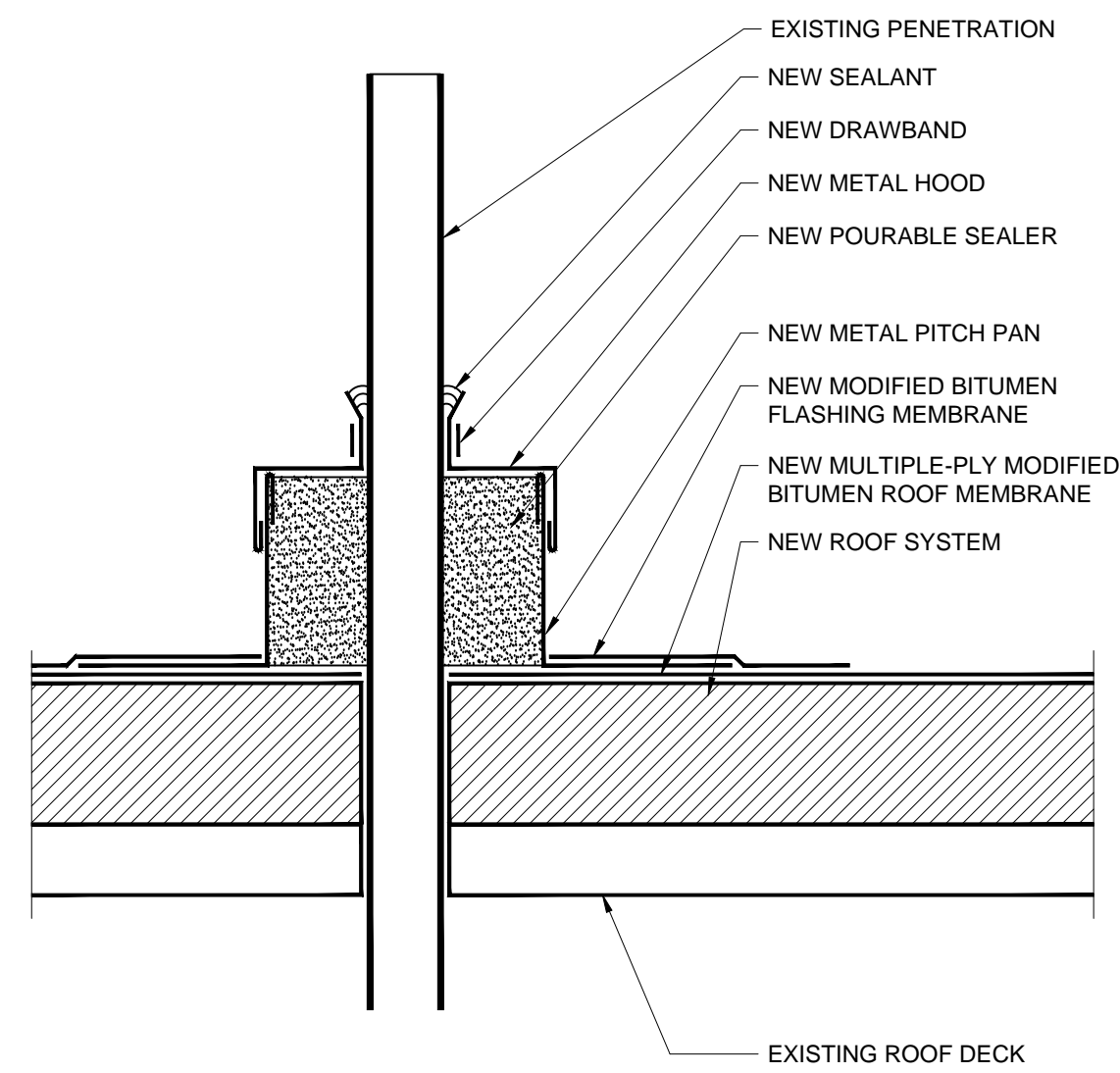
DETAILS

Drawing No.

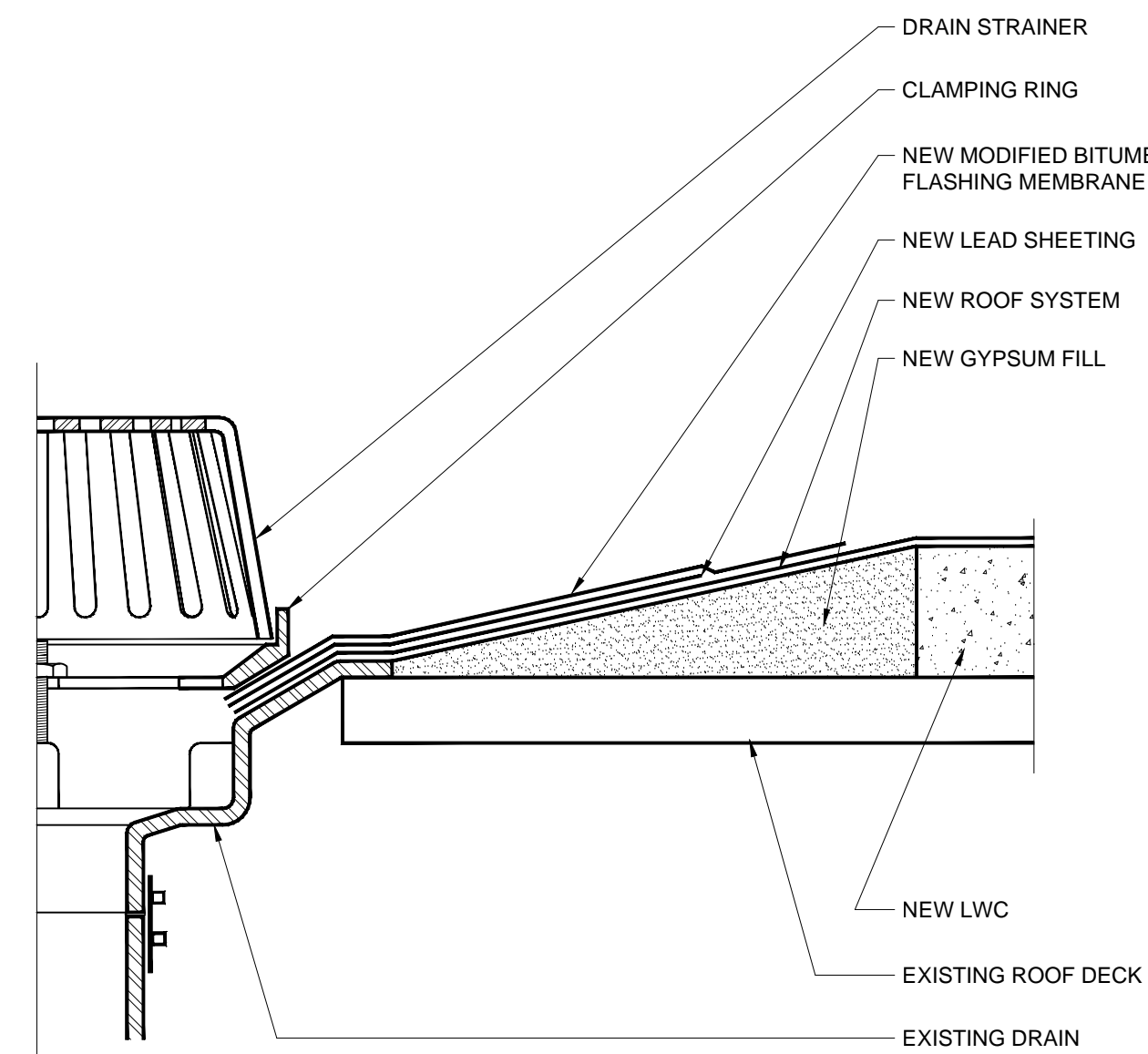
A103



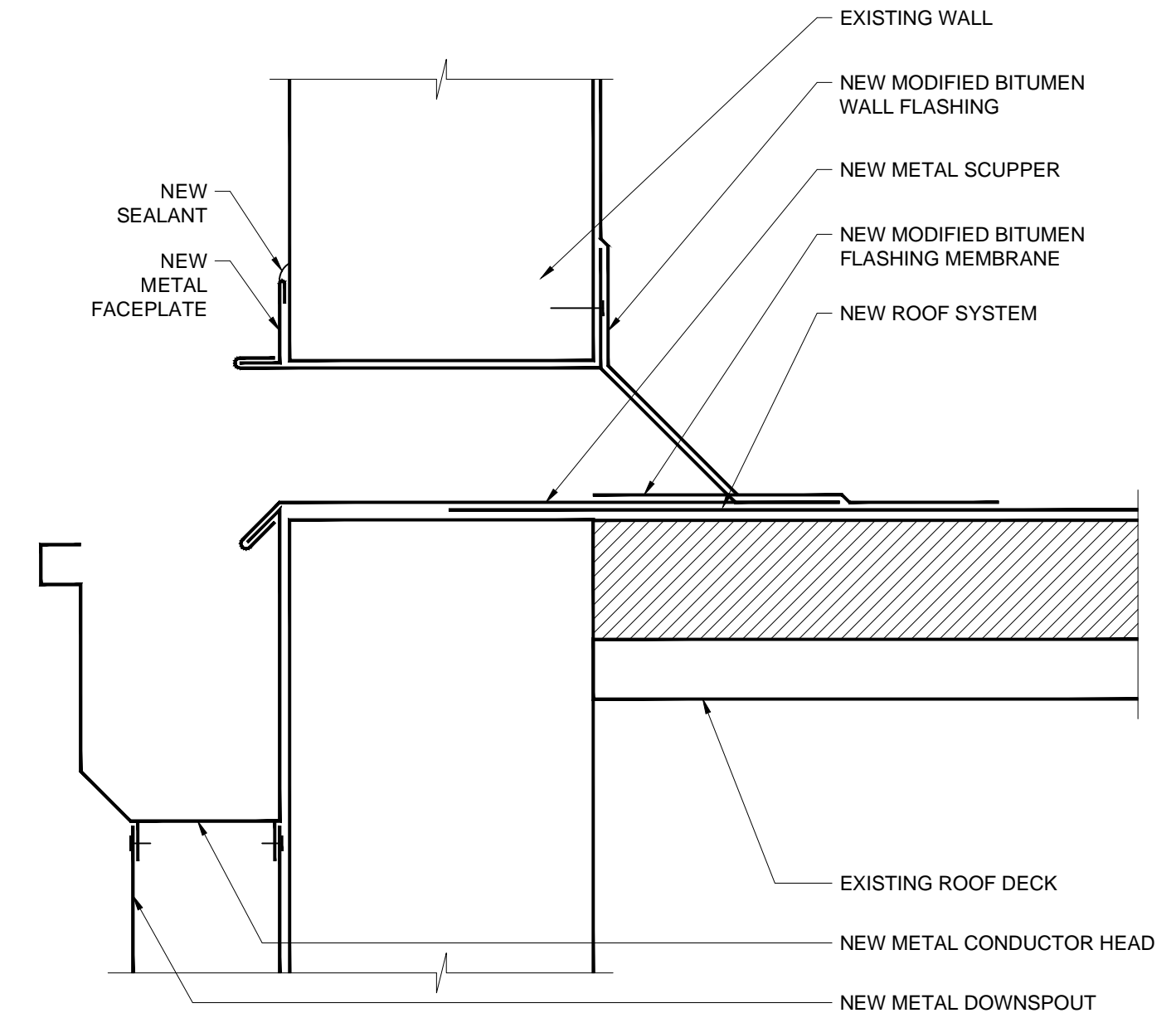
9 VENT
A104



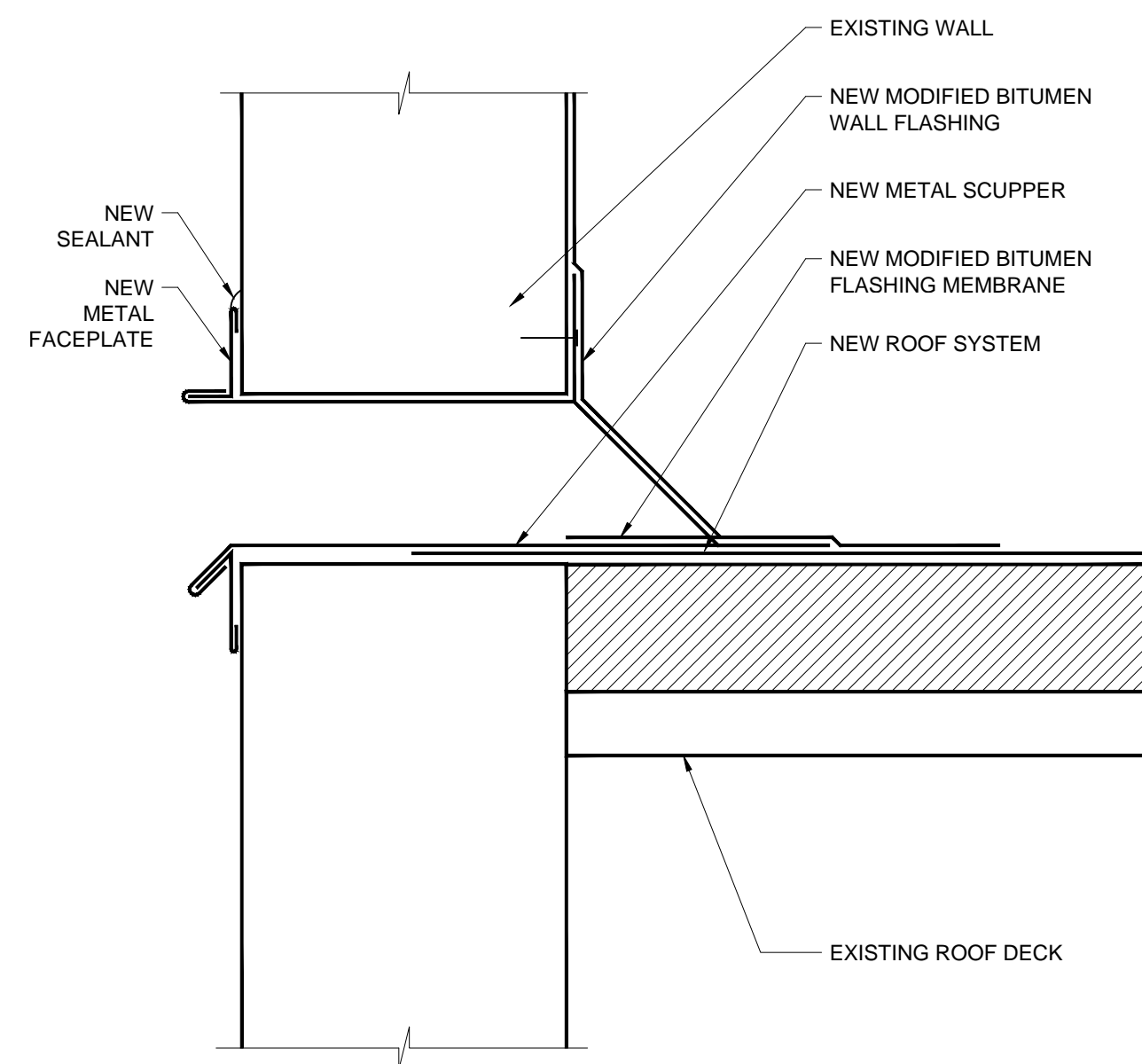
10 PITCH PAN
A104



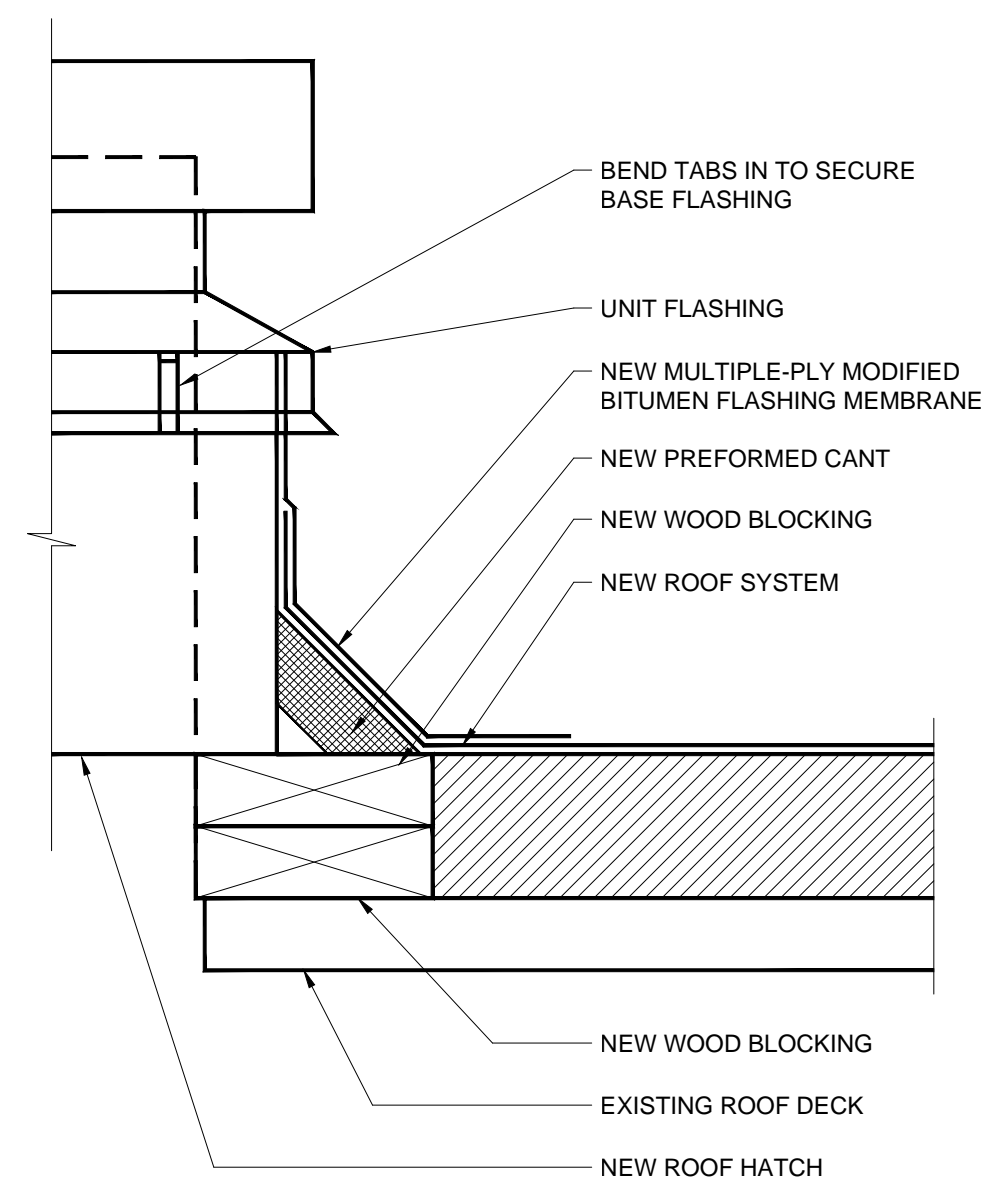
11 DRAIN
A104



12 SCUPPER
A104



13 OVERFLOW SCUPPER
A104



14 NEW HATCH
A104

Project Name

WYANDOTTE COUNTY JUSTICE COMPLEX

710 N. 7th ST

KANSAS CITY, KS 66101

RTI Consultants
22117 W. 83rd Street
Lenexa, KS 66227
(913) 649-6565

Date: FEBRUARY 2017

Scale: NOT TO SCALE

Drawn By: RTI

Reviewed By: MJG

Revision No. Date

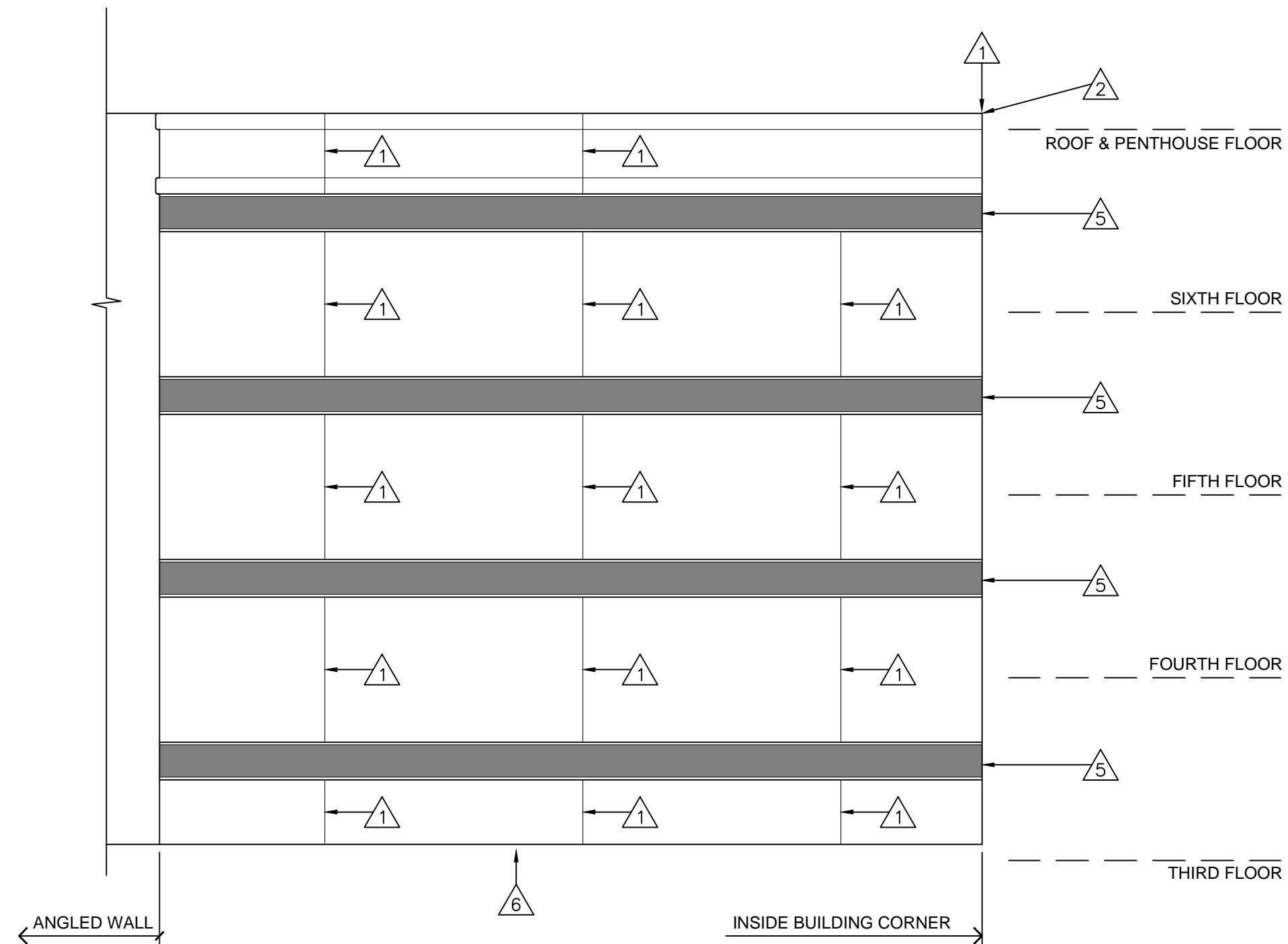
RTI No. 17015.02

Drawing Title

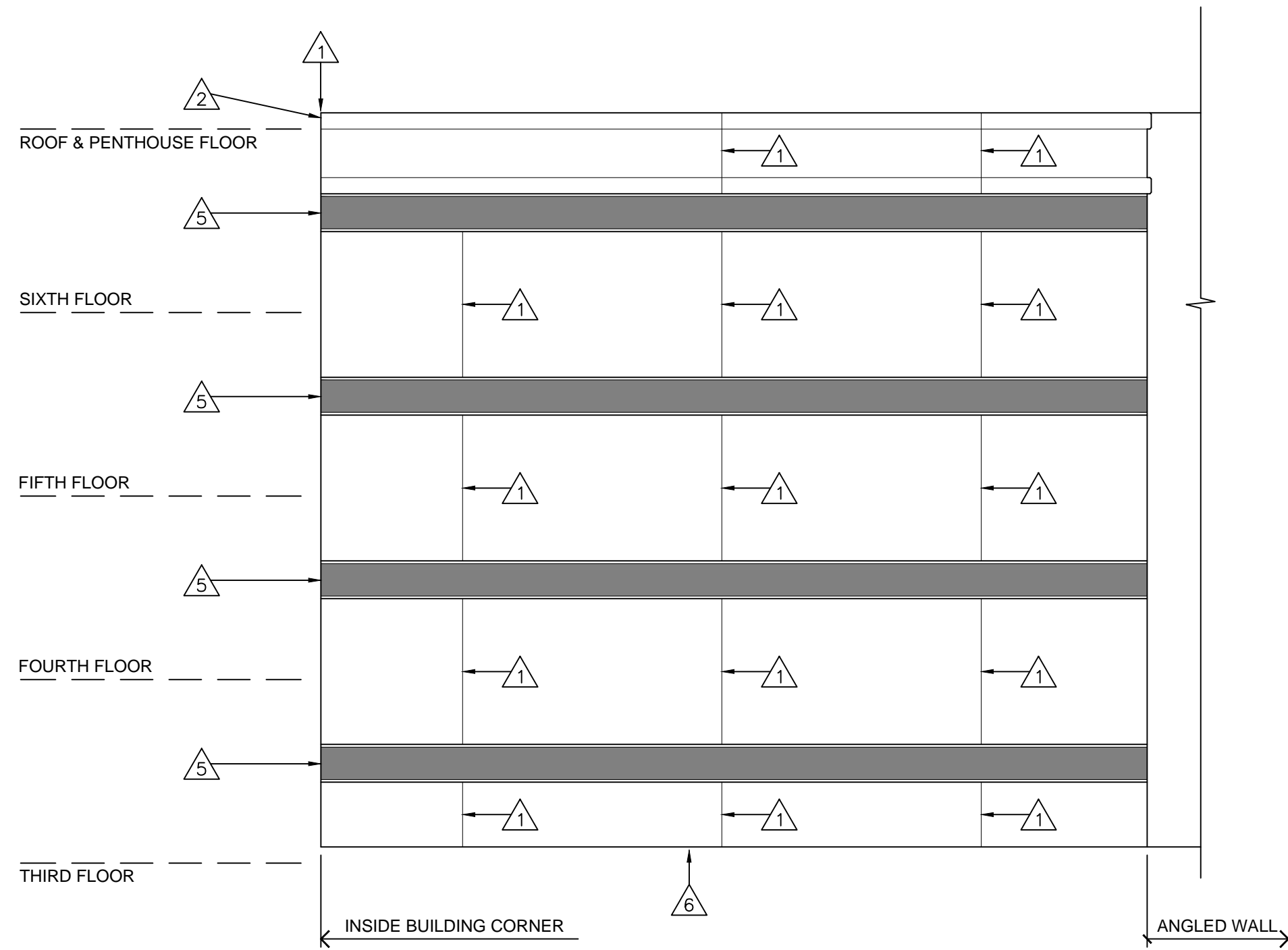
DETAILS

Drawing No.

A104



ELEVATION B
1/8"= 1'-0"



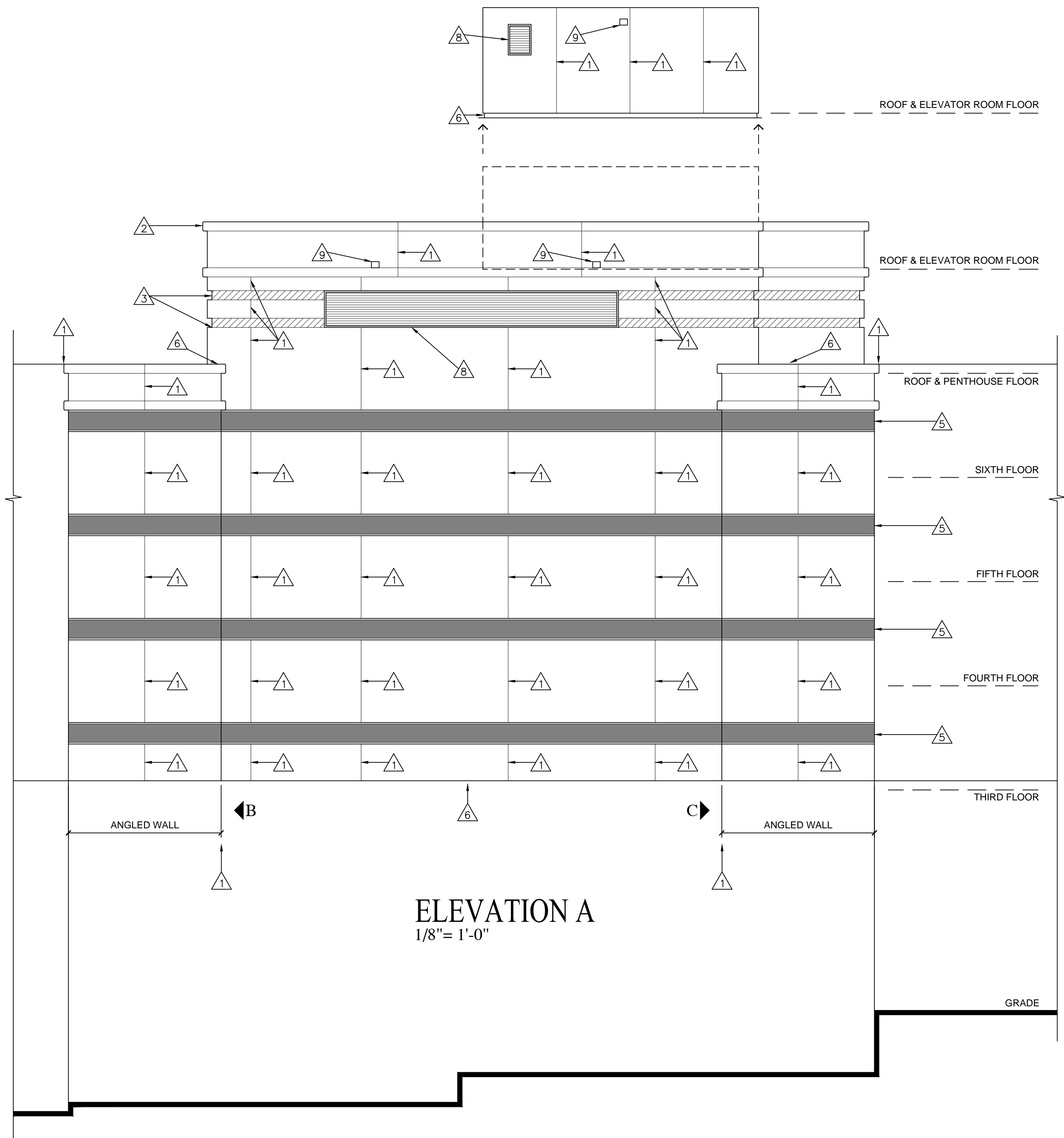
ELEVATION C
1/8"= 1'-0"

GENERAL NOTES

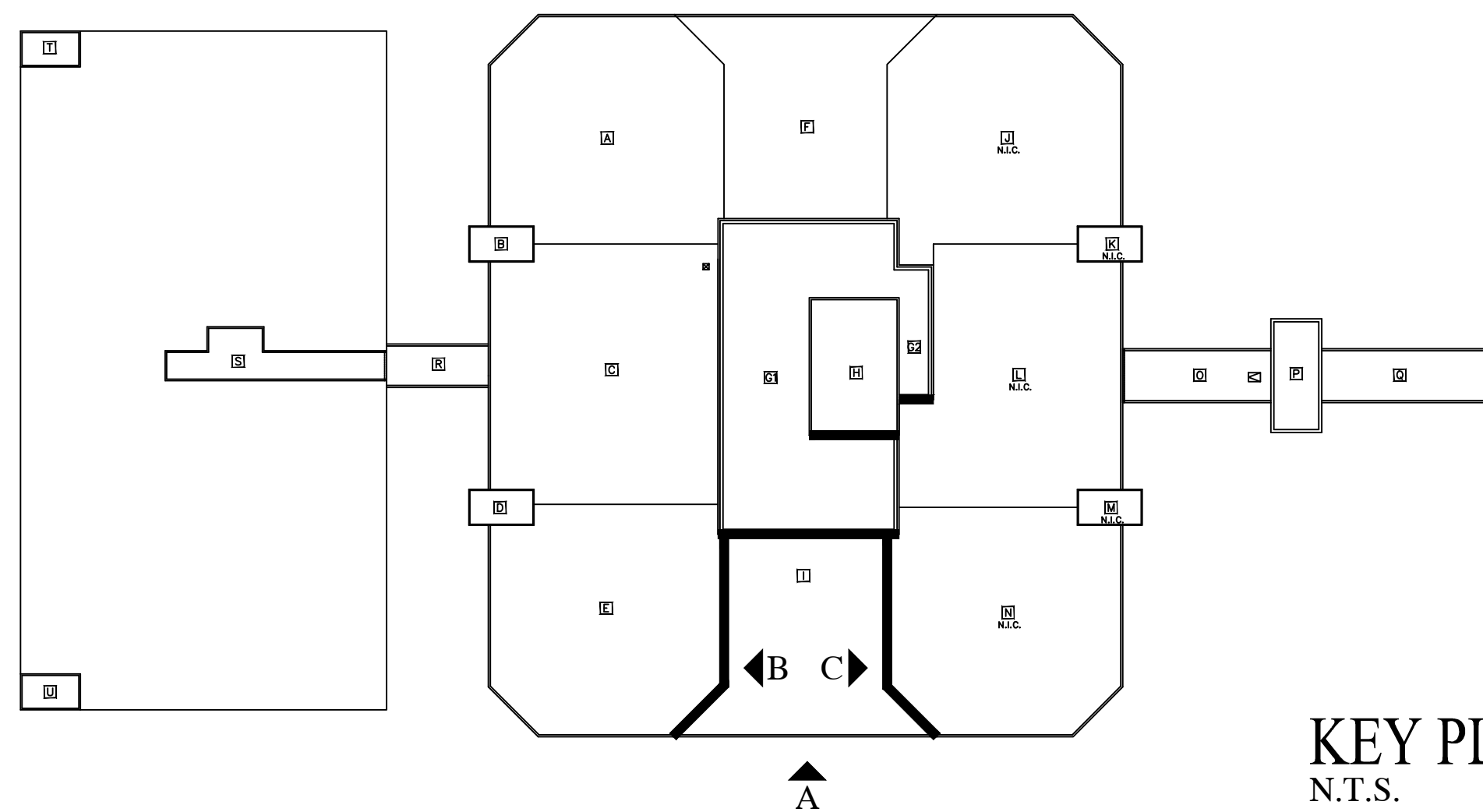
1. CONTRACTOR RESPONSIBLE FOR PROTECTION OF EXISTING CONCRETE, ASPHALT AND LANDSCAPED AREAS. REPAIR DAMAGE CAUSED BY CONTRACTOR. REPAIRS SHALL BE PER OWNERS REQUIREMENTS.
2. CONTRACTOR RESPONSIBLE FOR PROTECTION OF ALL EXISTING ROOF SURFACES.
3. CONTRACTOR TO FOLLOW ALL SAFETY REQUIREMENTS PER OSHA.
4. AT COMPLETION OF PROJECT REMOVE DEBRIS FROM ADJACENT ROOF AREAS.
5. EXISTING SEALANT REPLACEMENT AT BUILDING LOCATIONS AS INDICATED. REMOVE EXISTING SEALANT AND BACKER ROD. CLEAN AND PREPARE JOINT SURFACES. INSTALL NEW BACKER ROD AND SEALANT.

NOTES

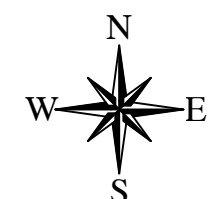
1. CONCRETE PANEL JOINT. TOOL NEW SEALANT FOR CONCAVE RECESSED JOINT.
2. PARAPET WALL. NEW SEALANT JOINT ACROSS TOP OF WALL. NEW SEALANT ON BACK SIDE OF PARAPET AT TOP OF EXISTING TERMINATION BAR.
3. GRANITE PANELS AT 12-INCHES WIDE AND MAXIMUM 48-INCHES LONG. NEW SEALANT AT JOINTS BETWEEN GRANITE PANELS AND CONCRETE PANELS AND JOINTS BETWEEN GRANITE PANELS.
4. GRANITE PANELS, FOUR EACH AT APPROXIMATELY 36-INCHES SQUARE. NEW SEALANT AT JOINTS BETWEEN GRANITE PANELS AND CONCRETE PANELS AND JOINTS BETWEEN GRANITE PANELS.
5. CONTINUOUS WINDOWS. NEW SEALANT AT JOINTS BETWEEN WINDOW FRAME AND CONCRETE PANELS. SPOT CLEAN CORROSION AND LOOSE PAINT FROM WINDOW FRAMES AND APPLY TWO COATS OF RUST-OLEUM® RUSTY METAL PRIMER.
6. ROOF FLASHING. NEW SEALANT AT JOINT BETWEEN EXISTING METAL ROOF FLASHING RECEIVER AND CONCRETE PANEL.
7. MASONRY OPENING. NEW SEALANT AT JOINTS BETWEEN METAL FRAME AND CONCRETE PANEL.
8. MISCELLANEOUS PENETRATION. INSTALL PERIMETER NEW SEALANT.
9. SCUPPER. REFER TO ROOF DETAIL 12/A104 AND 13/A104.



ELEVATION A
1/8"= 1'-0"



KEY PLAN
N.T.S.



Project Name

WYANDOTTE COUNTY JUSTICE COMPLEX

710 N. 7th ST
KANSAS CITY, KS 66101

RTI Consultants
22117 W. 83rd Street
Lenexa, KS 66227
(913) 649-6565

Date: FEBRUARY 2017

Scale: 1/8"=1'-0"

Drawn By: RTI

Reviewed By: MJG

Revision No. Date

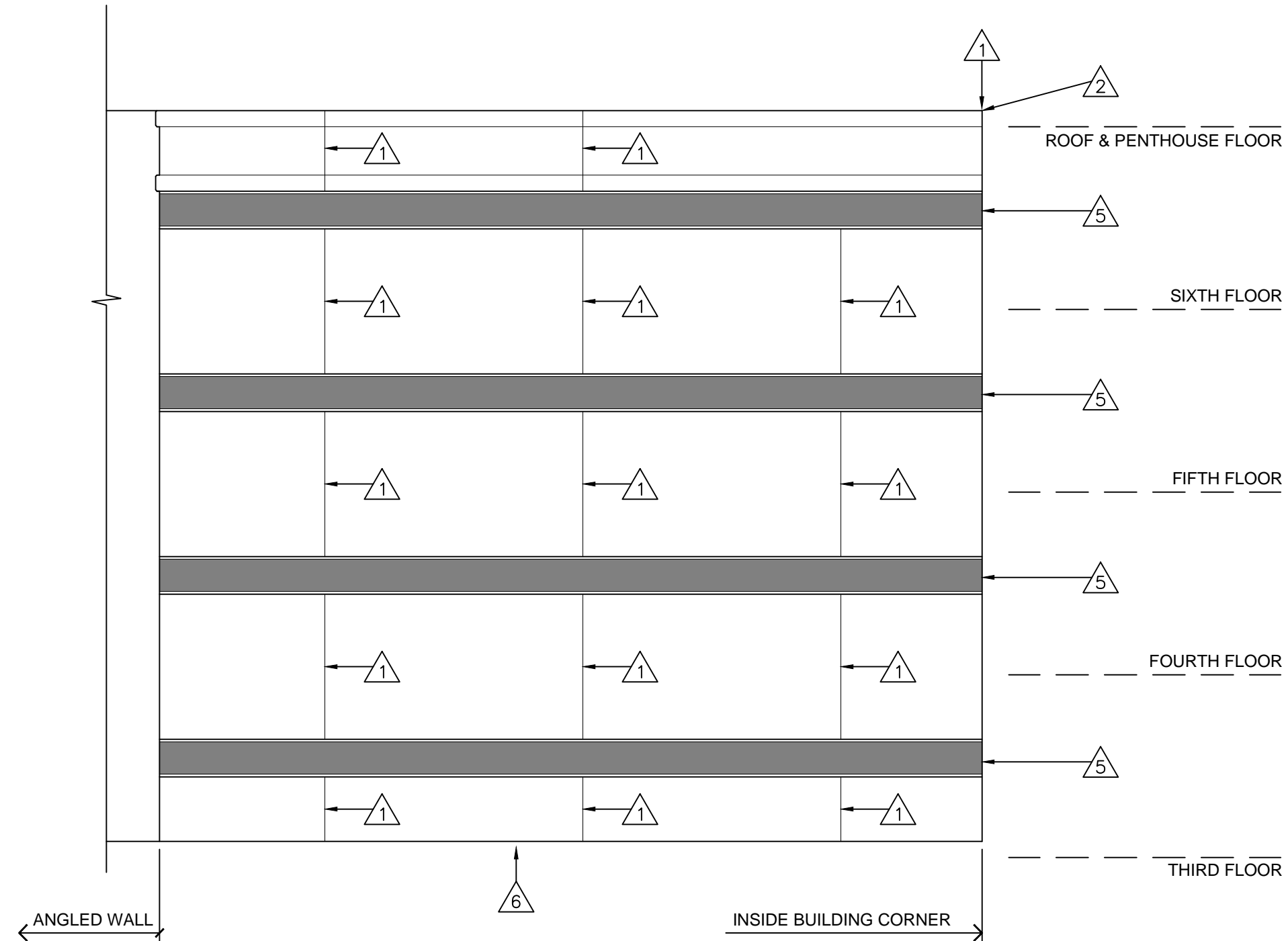
RTI No. 17015.02

Drawing Title

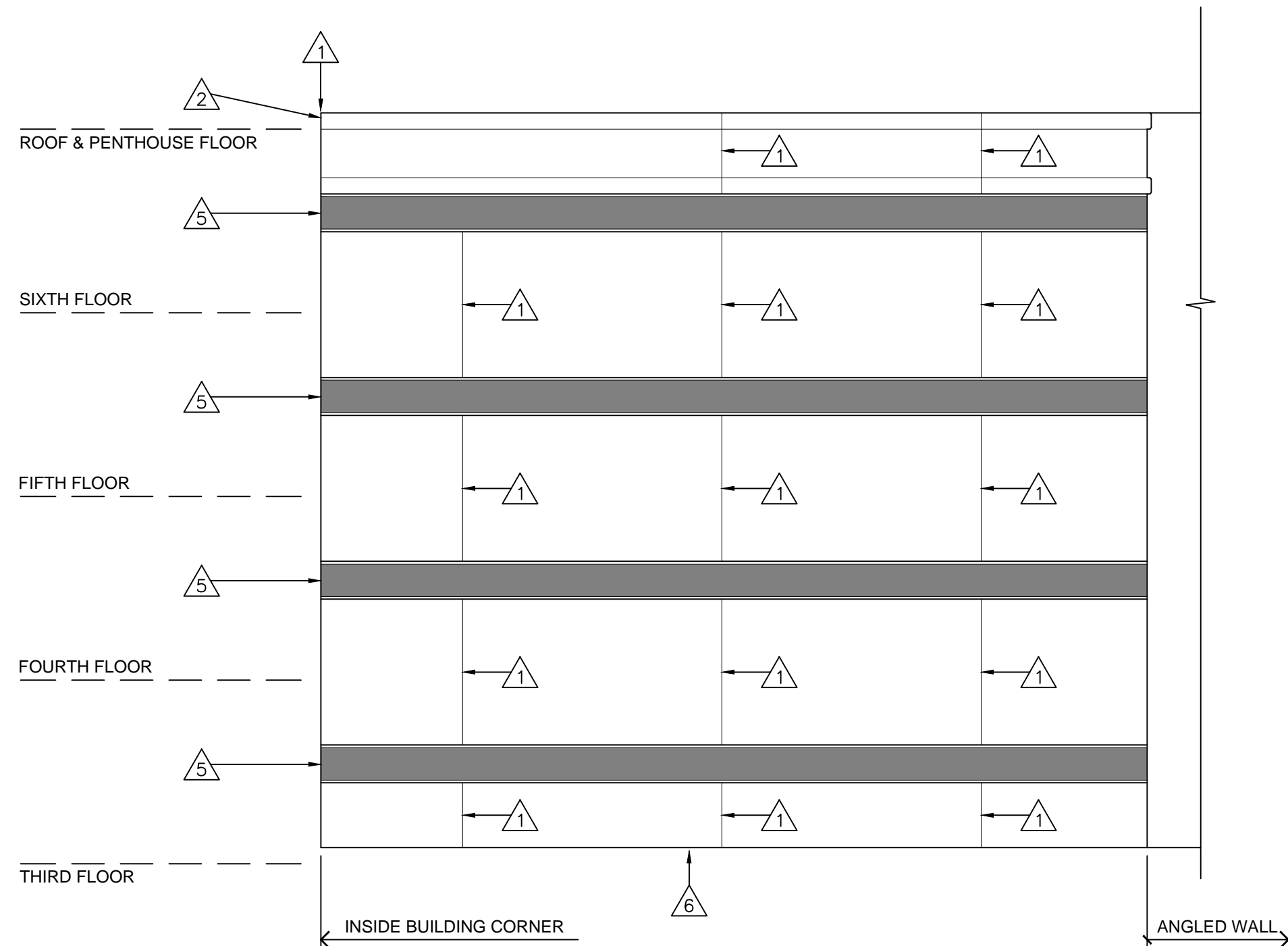
SOUTH
ELEVATION

Drawing No.

A200



ELEVATION B
1/8"= 1'-0"



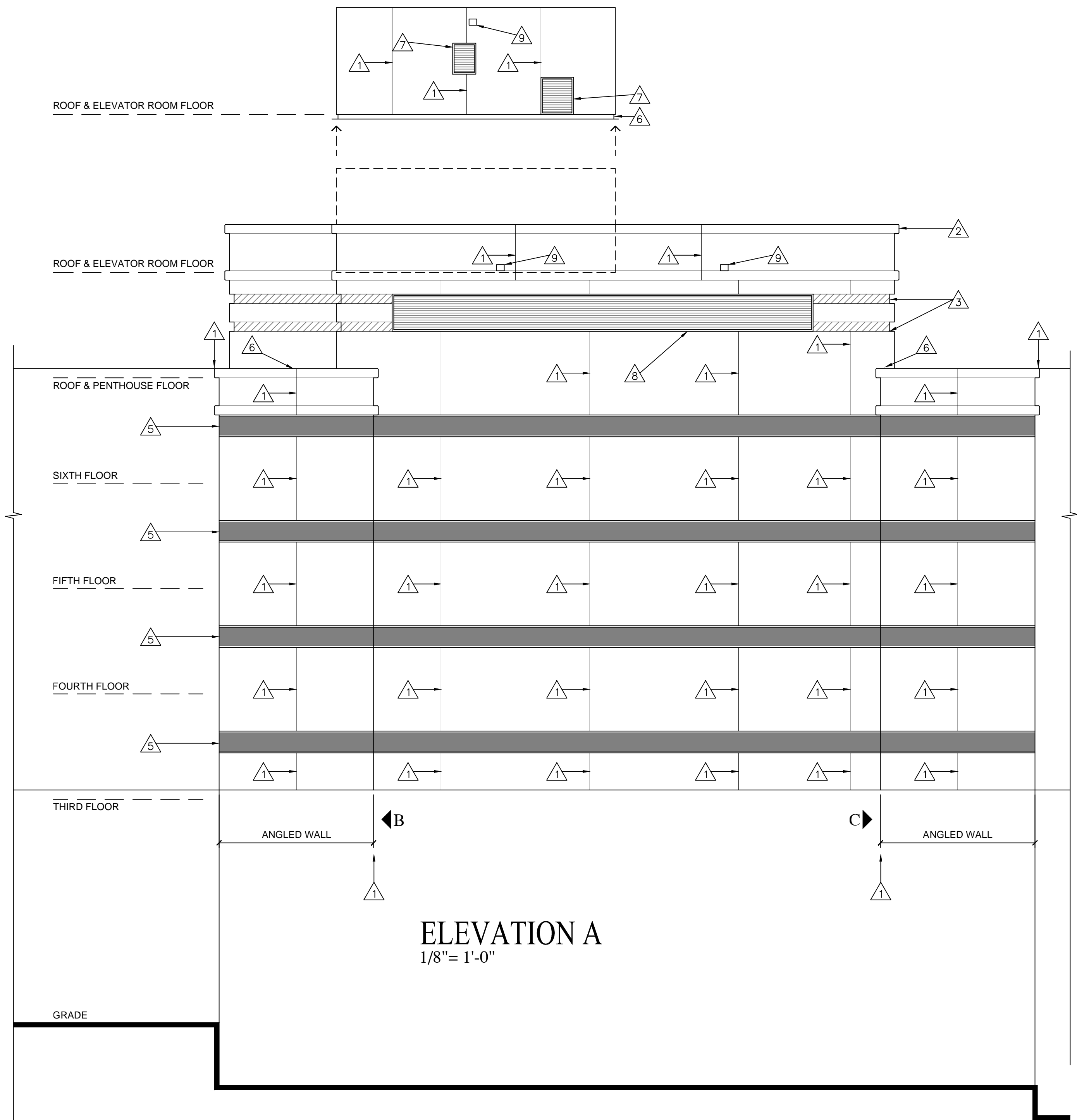
ELEVATION C
1/8"= 1'-0"

GENERAL NOTES

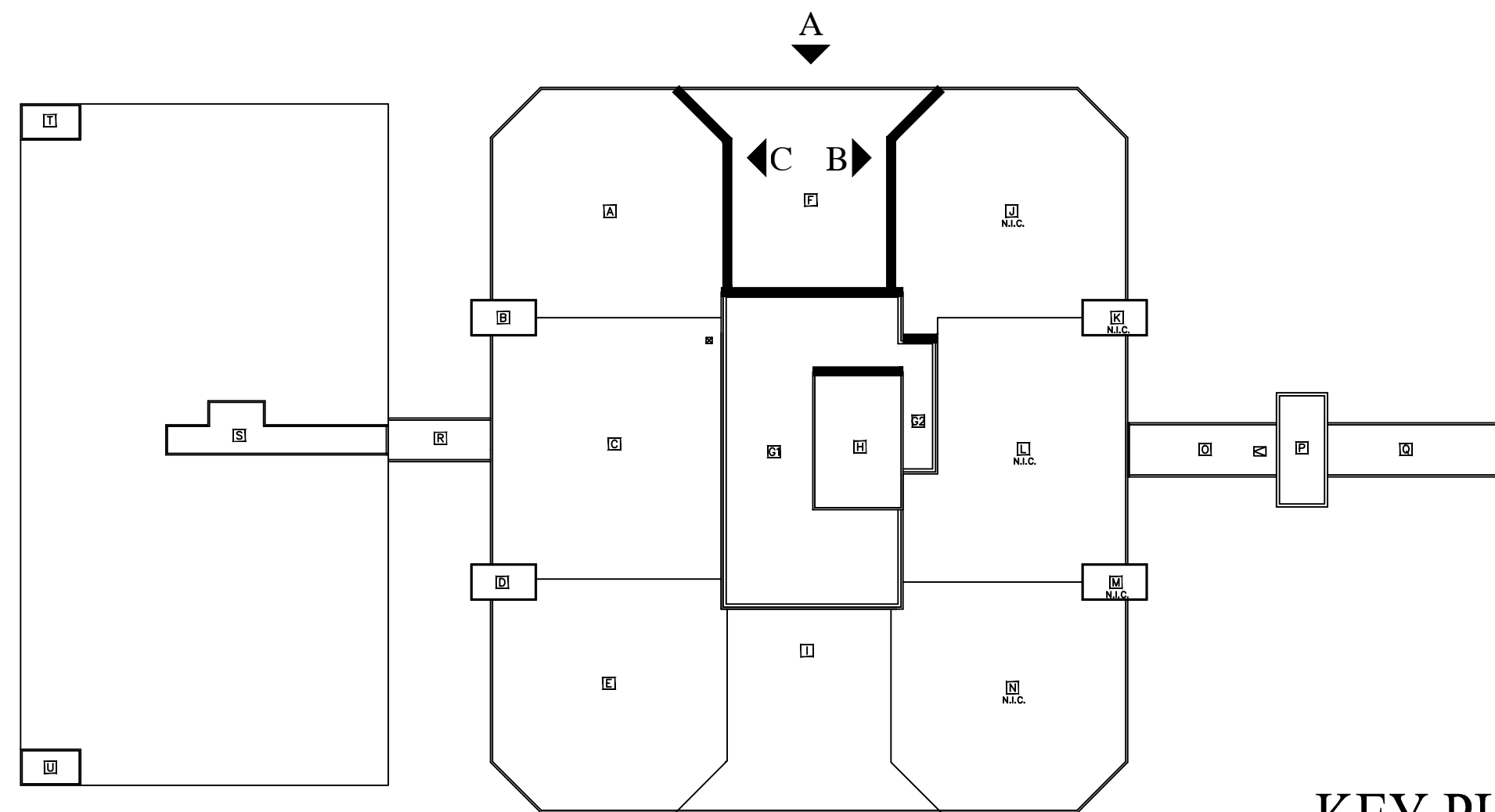
1. CONTRACTOR RESPONSIBLE FOR PROTECTION OF EXISTING CONCRETE, ASPHALT AND LANDSCAPED AREAS. REPAIR DAMAGE CAUSED BY CONTRACTOR. REPAIRS SHALL BE PER OWNERS REQUIREMENTS.
2. CONTRACTOR RESPONSIBLE FOR PROTECTION OF ALL EXISTING ROOF SURFACES.
3. CONTRACTOR TO FOLLOW ALL SAFETY REQUIREMENTS PER OSHA.
4. AT COMPLETION OF PROJECT REMOVE DEBRIS FROM ADJACENT ROOF AREAS.
5. EXISTING SEALANT REPLACEMENT AT BUILDING LOCATIONS AS INDICATED. REMOVE EXISTING SEALANT AND BACKER ROD, CLEAN AND PREPARE JOINT SURFACES, INSTALL NEW BACKER ROD AND SEALANT.

NOTES

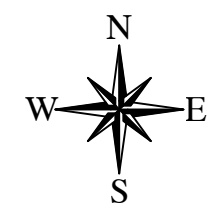
1. CONCRETE PANEL JOINT. TOOL NEW SEALANT FOR CONCAVE RECESSED JOINT.
2. PARAPET WALL. NEW SEALANT JOINT ACROSS TOP OF WALL. NEW SEALANT ON BACK SIDE OF PARAPET AT TOP OF EXISTING TERMINATION BAR.
3. GRANITE PANELS AT 12-INCHES WIDE AND MAXIMUM 48-INCHES LONG. NEW SEALANT AT JOINTS BETWEEN GRANITE PANELS AND CONCRETE PANELS AND JOINTS BETWEEN GRANITE PANELS.
4. GRANITE PANELS, FOUR EACH AT APPROXIMATELY 36-INCHES SQUARE. NEW SEALANT AT JOINTS BETWEEN GRANITE PANELS AND CONCRETE PANELS AND JOINTS BETWEEN GRANITE PANELS.
5. CONTINUOUS WINDOWS. NEW SEALANT AT JOINTS BETWEEN WINDOW FRAME AND CONCRETE PANELS. SPOT CLEAN CORROSION AND LOOSE PAINT FROM WINDOW FRAMES AND APPLY TWO COATS OF RUST-OLEUM® RUSTY METAL PRIMER.
6. ROOF FLASHING. NEW SEALANT AT JOINT BETWEEN EXISTING METAL ROOF FLASHING RECEIVER AND CONCRETE PANEL.
7. MASONRY OPENING. NEW SEALANT AT JOINTS BETWEEN METAL FRAME AND CONCRETE PANEL.
8. MISCELLANEOUS PENETRATION. INSTALL PERIMETER NEW SEALANT.
9. SCUPPER. REFER TO ROOF DETAIL 12/A104 AND 13/A104.



ELEVATION A
1/8"= 1'-0"



KEY PLAN
N.T.S.



Project Name

WYANDOTTE COUNTY JUSTICE COMPLEX

710 N. 7th ST

KANSAS CITY, KS 66101

RTI Consultants

22117 W. 83rd Street
Lenexa, KS 66227
(913) 649-6565

Date: FEBRUARY 2017

Scale: 1/8"=1'-0"

Drawn By: RTI

Reviewed By: MJG

Revision No. Date

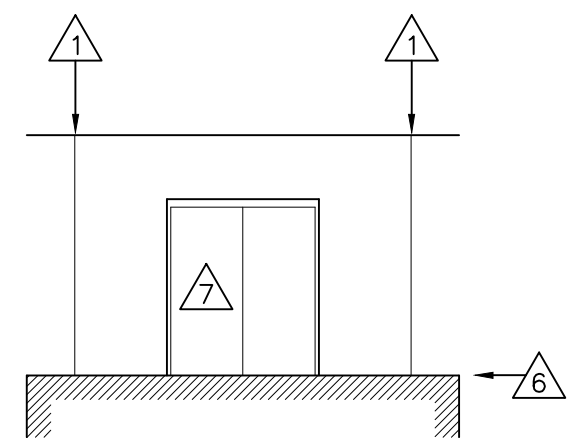
RTI No. 17015.02

Drawing Title

NORTH
ELEVATION

Drawing No.

A201



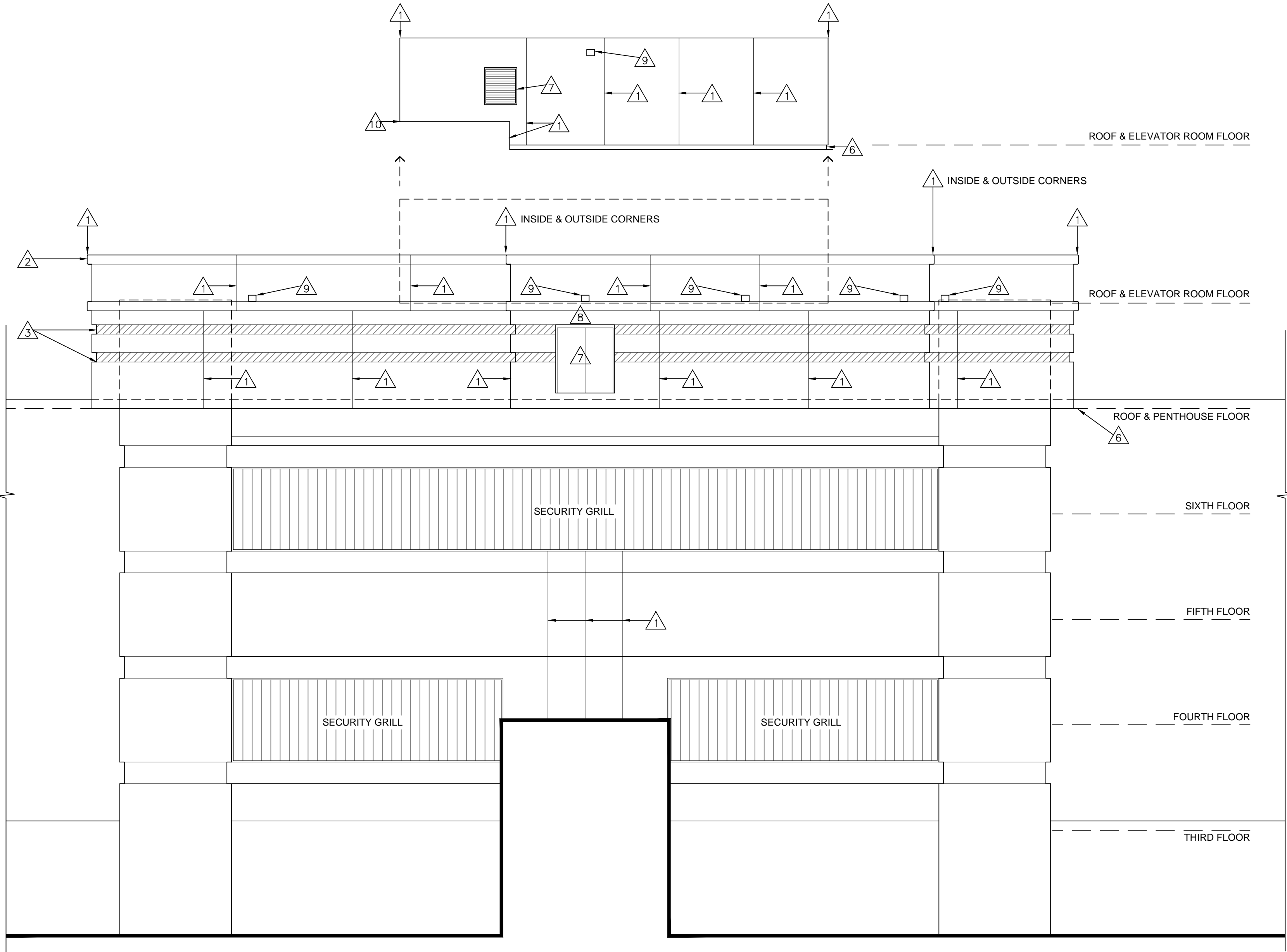
(TYPICAL 2 PLACES)
ELEVATION B
1/8"= 1'-0"

GENERAL NOTES

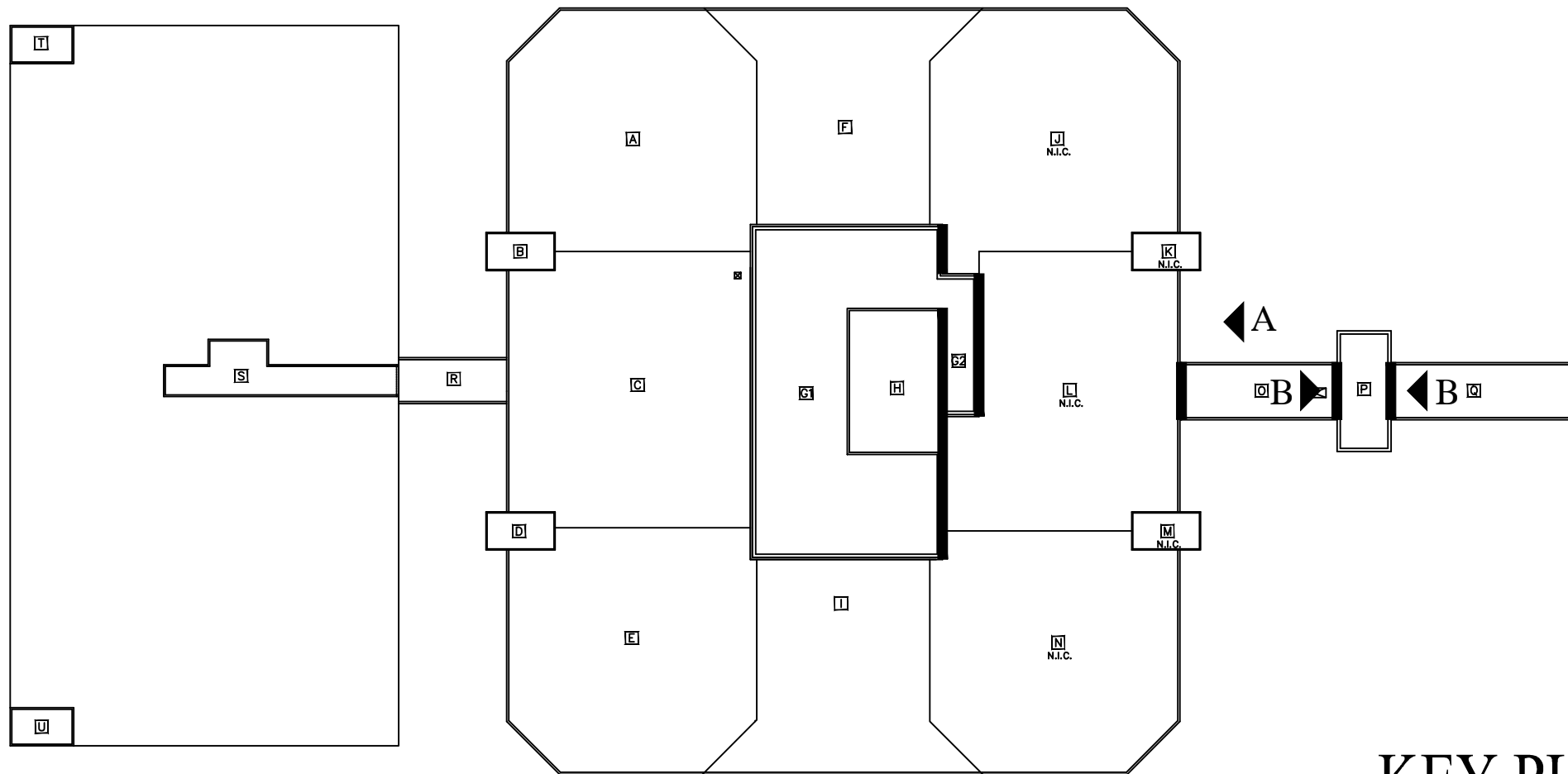
1. CONTRACTOR RESPONSIBLE FOR PROTECTION OF EXISTING CONCRETE, ASPHALT AND LANDSCAPED AREAS. REPAIR DAMAGE CAUSED BY CONTRACTOR. REPAIRS SHALL BE PER OWNERS REQUIREMENTS.
2. CONTRACTOR RESPONSIBLE FOR PROTECTION OF ALL EXISTING ROOF SURFACES.
3. CONTRACTOR TO FOLLOW ALL SAFETY REQUIREMENTS PER OSHA.
4. AT COMPLETION OF PROJECT REMOVE DEBRIS FROM ADJACENT ROOF AREAS.
5. EXISTING SEALANT REPLACEMENT AT BUILDING LOCATIONS AS INDICATED. REMOVE EXISTING SEALANT AND BACKER ROD, CLEAN AND PREPARE JOINT SURFACES, INSTALL NEW BACKER ROD AND SEALANT.

NOTES

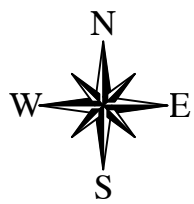
1. CONCRETE PANEL JOINT. TOOL NEW SEALANT FOR CONCAVE RECESSED JOINT.
2. PARAPET WALL. NEW SEALANT JOINT ACROSS TOP OF WALL. NEW SEALANT ON BACK SIDE OF PARAPET AT TOP OF EXISTING TERMINATION BAR.
3. GRANITE PANELS AT 12-INCHES WIDE AND MAXIMUM 48-INCHES LONG. NEW SEALANT AT JOINTS BETWEEN GRANITE PANELS AND CONCRETE PANELS AND JOINTS BETWEEN GRANITE PANELS.
4. GRANITE PANELS, FOUR EACH AT APPROXIMATELY 36-INCHES SQUARE. NEW SEALANT AT JOINTS BETWEEN GRANITE PANELS AND CONCRETE PANELS AND JOINTS BETWEEN GRANITE PANELS.
5. CONTINUOUS WINDOWS. NEW SEALANT AT JOINTS BETWEEN WINDOW FRAME AND CONCRETE PANELS. SPOT CLEAN CORROSION AND LOOSE PAINT FROM WINDOW FRAMES AND APPLY TWO COATS OF RUST-OLEUM® RUSTY METAL PRIMER.
6. ROOF FLASHING. NEW SEALANT AT JOINT BETWEEN EXISTING METAL ROOF FLASHING RECEIVER AND CONCRETE PANEL.
7. MASONRY OPENING. NEW SEALANT AT JOINTS BETWEEN METAL FRAME AND CONCRETE PANEL.
8. MISCELLANEOUS PENETRATION. INSTALL PERIMETER NEW SEALANT.
9. SCUPPER. REFER TO ROOF DETAIL 12/A104 AND 13/A104.
10. NEW SEALANT BETWEEN BOTTOM OF CONCRETE PANEL AND PARAPET WALL.



ELEVATION A
1/8"= 1'-0"



KEY PLAN
N.T.S.



Project Name

WYANDOTTE COUNTY JUSTICE COMPLEX
710 N. 7th ST
KANSAS CITY, KS 66101

RTI Consultants
22117 W. 83rd Street
Lenexa, KS 66227
(913) 649-6565

Date: FEBRUARY 2017

Scale: 1/8"=1'-0"

Drawn By: RTI

Reviewed By: MJG

Revision No. Date

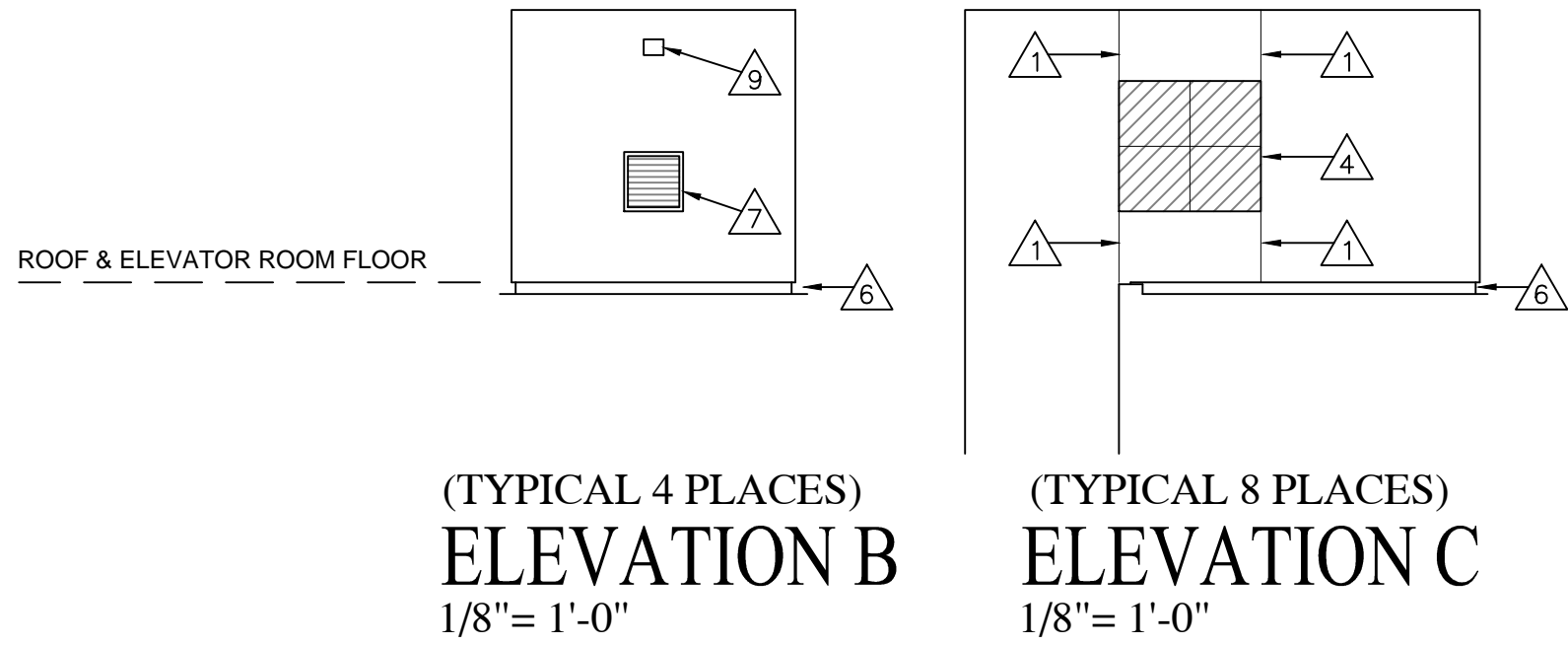
RTI No. 17015.02

Drawing Title

**EAST
ELEVATION**

Drawing No.

A202

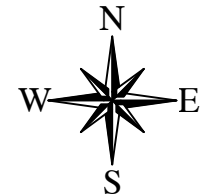
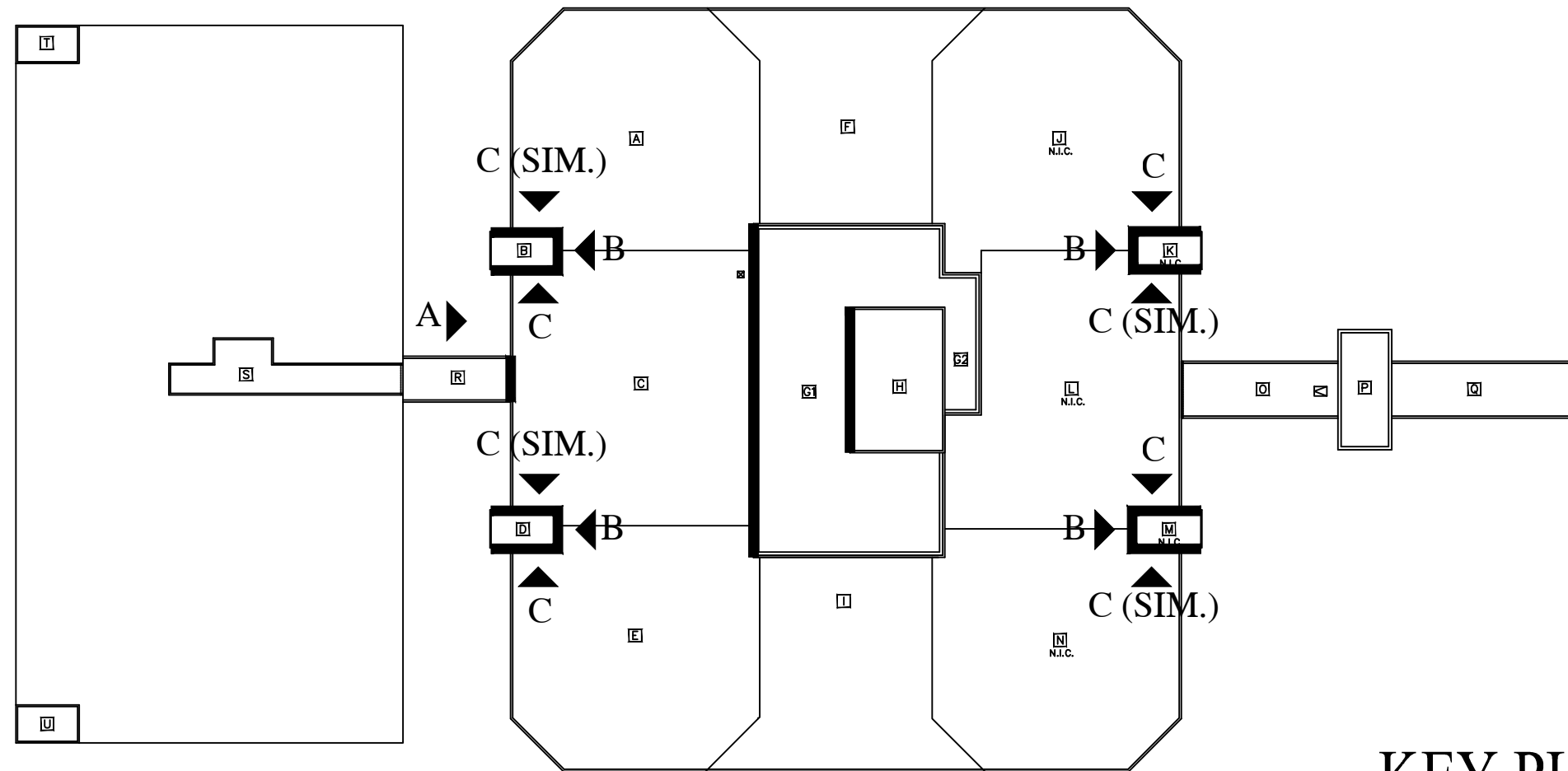
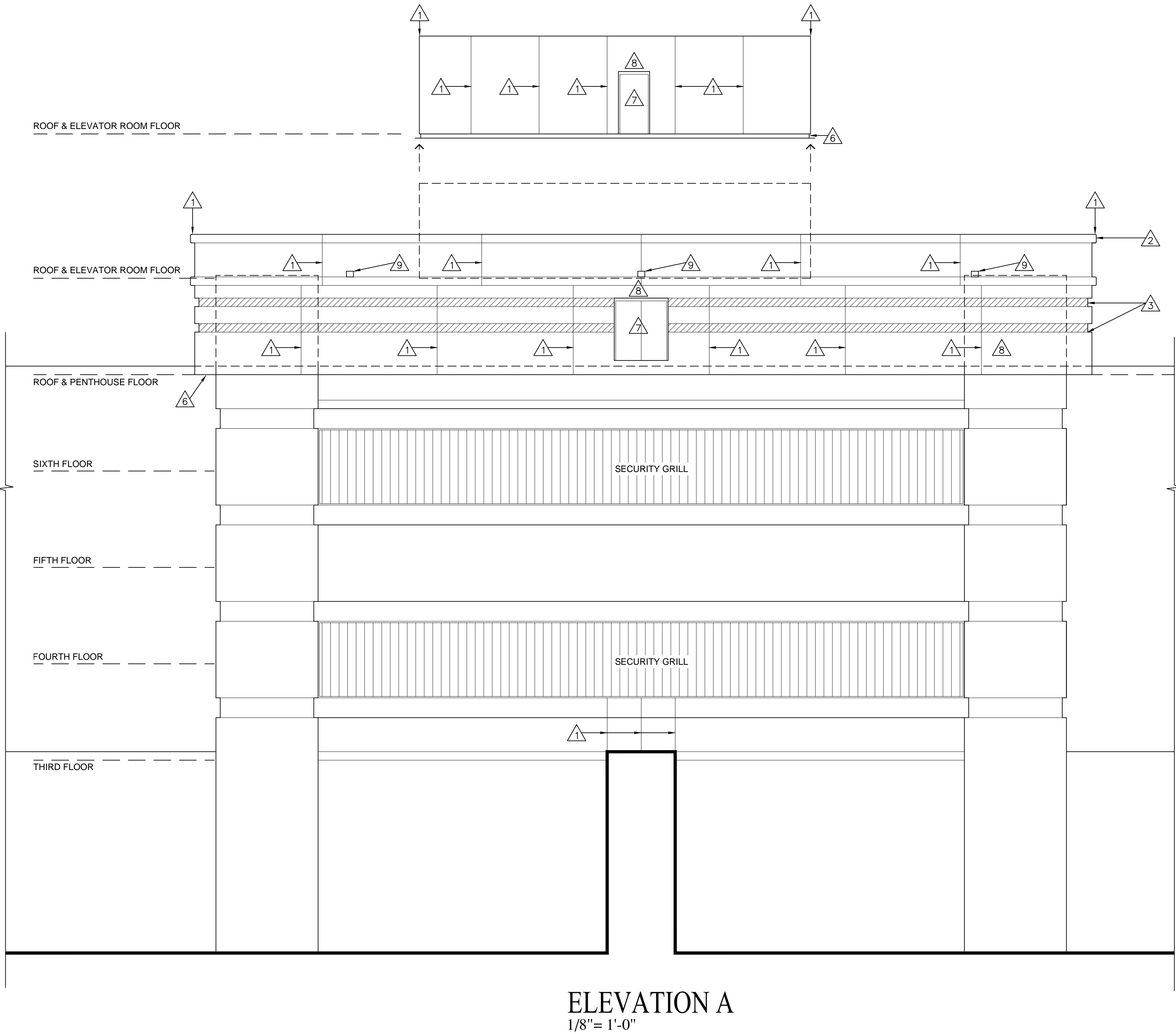


GENERAL NOTES

1. CONTRACTOR RESPONSIBLE FOR PROTECTION OF EXISTING CONCRETE, ASPHALT AND LANDSCAPED AREAS. REPAIR DAMAGE CAUSED BY CONTRACTOR. REPAIRS SHALL BE PER OWNERS REQUIREMENTS.
2. CONTRACTOR RESPONSIBLE FOR PROTECTION OF ALL EXISTING ROOF SURFACES.
3. CONTRACTOR TO FOLLOW ALL SAFETY REQUIREMENTS PER OSHA.
4. AT COMPLETION OF PROJECT REMOVE DEBRIS FROM ADJACENT ROOF AREAS.
5. EXISTING SEALANT REPLACEMENT AT BUILDING LOCATIONS AS INDICATED. REMOVE EXISTING SEALANT AND BACKER ROD, CLEAN AND PREPARE JOINT SURFACES, INSTALL NEW BACKER ROD AND SEALANT.

NOTES

1. CONCRETE PANEL JOINT. TOOL NEW SEALANT FOR CONCAVE RECESSED JOINT.
2. PARAPET WALL. NEW SEALANT JOINT ACROSS TOP OF WALL. NEW SEALANT ON BACK SIDE OF PARAPET AT TOP OF EXISTING TERMINATION BAR.
3. GRANITE PANELS AT 12-INCHES WIDE AND MAXIMUM 48-INCHES LONG. NEW SEALANT AT JOINTS BETWEEN GRANITE PANELS AND CONCRETE PANELS AND JOINTS BETWEEN GRANITE PANELS.
4. GRANITE PANELS, FOUR EACH AT APPROXIMATELY 36-INCHES SQUARE. NEW SEALANT AT JOINTS BETWEEN GRANITE PANELS AND CONCRETE PANELS AND JOINTS BETWEEN GRANITE PANELS.
5. CONTINUOUS WINDOWS. NEW SEALANT AT JOINTS BETWEEN WINDOW FRAME AND CONCRETE PANELS. SPOT CLEAN CORROSION AND LOOSE PAINT FROM WINDOW FRAMES AND APPLY TWO COATS OF RUST-OLEUM® RUSTY METAL PRIMER.
6. ROOF FLASHING. NEW SEALANT AT JOINT BETWEEN EXISTING METAL ROOF FLASHING RECEIVER AND CONCRETE PANEL.
7. MASONRY OPENING. NEW SEALANT AT JOINTS BETWEEN METAL FRAME AND CONCRETE PANEL.
8. MISCELLANEOUS PENETRATION. INSTALL PERIMETER NEW SEALANT.
9. SCUPPER. REFER TO ROOF DETAIL 12/A104 AND 13/A104.



Project Name

WYANDOTTE COUNTY JUSTICE COMPLEX

**710 N. 7th ST
KANSAS CITY, KS 66101**

RTI Consultants
22117 W. 83rd Street
Lenexa, KS 66227
(913) 649-6565

Date: FEBRUARY 2017

Scale: 1/8"=1'-0"

Drawn By: RTI

Reviewed By: MJG

Revision No. Date

RTI No. 17015.02

Drawing Title

**WEST
ELEVATION**

Drawing No.

A203